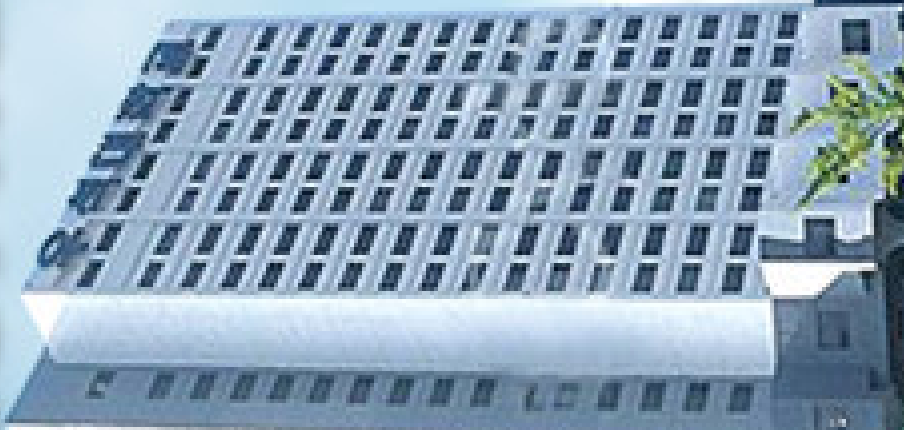


**Give your passion,
and we will return the whole world.**

ASEM School of

International Studies in Korea



WellTech



우석대학교





l(3)

Russia(2)

Kazakhstan(1)

Mongolia(2)

Japan(5)

USA(7)

Hungary(3)

Czech(1)

China(25)

India(4)

Cambodia(3)

Singapore(1), ASEF

Oman(4)

Vietnam(3)

Taiwan(2)

Malaysia(1)

Philippines(1)

New Zealand(2)

Education-oriented university
fostering core professionals

1st campus

Specialized in the
of Well-Being
technology

Th

Sp

on experts
ders

iversity's

onial

Offering the driving forces for realizing the nation's vision

Expanding the demands for internationalized professionals
filling the need for highly skilled professionals with global competitiveness

International Development

The desire for
modernization of
the province

Demand

Professionals armed with
expertise
skills +
soft skills;
+ Upright

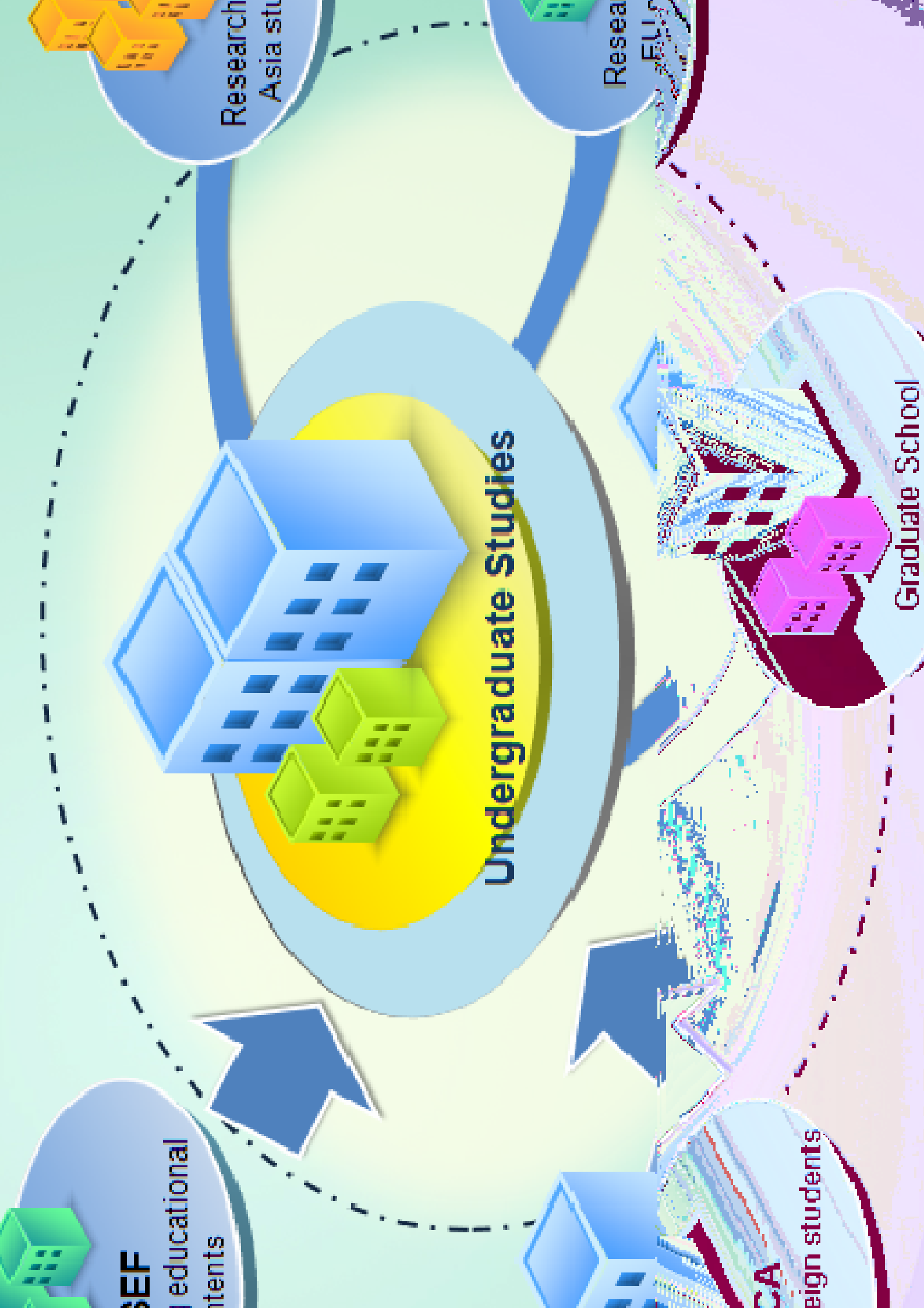


University

- Turning into a creative way of field-based tailored learning
- A pivotal role in national development

Government

- Training international regional trade professionals



**ASEM School of
International Studies
- Major -**

International Trade

International Management

International Culture

International Relations

**ASEM School of
Engineering
- Department -**

● EcoScience

● Energy Engineering

● Computer Engineering

● Civil & Environmental
Engineering

● Architectural Engineering

**ASEM School of
Society and Culture
- Department -**

● Media Arts and Advertising
(Media Arts, Advertising and
Public Relations)

● Public Policy and Welfare
(Political Science, Law and
Sociology)

● Musical and Performing Arts

● Industrial Design

Residential College System (RCS)

Allow both domestic and foreign students to stay and to study under the setting education and campus life united into one

Joint University Campus

Operate joint on- & off-line curriculum through the partnership with overseas universities of the ASEM countries

Global Academy Village

Step up the university administration system through constructing co-friendly & ubiquitous campus and a special zone where English is commonly used





- **Multilingual ability**

- **Regional knowledge**

- **Expertise on a particular market**

- **Refinement on the product**

- **Hands-on qualifications**

Educational and research function

- ASEM Education Hub (AEH) : ASEM School of International Education Hub
- A valuable channel of ASEM Education/Research : Web portal provides all related resources produced and presented by member universities.
- All resources necessary for ASEM research will be provided to researchers.

Society function

- "DURE Campaign"(Korean-international volunteer International Studies to play a pivotal role in the 21st century) : ASEM member universities to perform international volunteer

to the

School of
channel for

Construction of ASEM Education Hub (AEH) Korea

ASEF Summer School at Woosuk University

Voluntary Service

ASIS Educational Program / Professor & Student Support



Building ASEM Education Hub (AEH) Korea

2008	2009	2010 - 2011
<ul style="list-style-type: none"> - Organizing a board member of AEH - Allocating staff for AEH 	<p>Operating center for AEH</p>	<ul style="list-style-type: none"> - Asia hub of ASEM - Building AEH center
<ul style="list-style-type: none"> - Securing ASEM international culture building - Securing ASEM hall 	<p>.</p>	<p>Building AEH center on second campus</p>
<ul style="list-style-type: none"> - Collecting resources of ASEM countries - Computerising a pool of AEH human resources 	<ul style="list-style-type: none"> - Building a system of managing and utilising AEH resources - Search and checking - Having access to a pool of AEH human resources 	<p>overall program</p>
<ul style="list-style-type: none"> - Building community between Asia and Europe universities (10+1) 	<ul style="list-style-type: none"> - Building community between Asia and Europe universities (10+11) 	<ul style="list-style-type: none"> - Building community between Asia and Europe universities (10+1)

ASEF Summer School at Woosuk University

2008	2009
<ul style="list-style-type: none">- Organizing a board member of International Summer School- Considering promotional methods	<ul style="list-style-type: none">- Building operation center for International Summer School
<ul style="list-style-type: none">- Classroom and additional facilities for lectures	<ul style="list-style-type: none">- Securing the classroom for lectures
<ul style="list-style-type: none">- Thinking of program (including Korea culture experience program)- Credits- Brochure	<ul style="list-style-type: none">- Finalizing operating expenses with ASEF
<ul style="list-style-type: none">- Organizing a team of local & overseas professionals and English-teaching professors of Woosuk University	<ul style="list-style-type: none">- Securing instructors

Voluntary service

2008	2009	2010
<ul style="list-style-type: none">- Organizing a committee of ASEM universities presidents- Preparing MOU signing- Organizing a board member	<ul style="list-style-type: none">- MoU signing- Selecting voluntary service program students (15 universities)- Building operation center	<ul style="list-style-type: none">- Selecting voluntary service program students (all universities)
<ul style="list-style-type: none">- voluntary service program including local, overseas program as well as existing international voluntary service program- Discussing Who/How long/How much for voluntary service program- Compromising cost and period- Screening of voluntary service area	<ul style="list-style-type: none">- Operating pilot program- Deciding service area	<ul style="list-style-type: none">- Program activities

Purpose

To reinforce understanding and co-operation among ASEM countries

between people-to-people and cultural exchanges

To combine efforts with Korean government and Woosuk University

to promote the international exchange

Major role

- General management ASEM Education Hub
- An official channel between research institutions and universities in ASEM countries

request for co-operation

Advertize AEH Korea to the member countries and requesting resou

Financial support for operating ASEM Education Hub

Support the member countries to participate in the program and to cooperate with each other



purpose

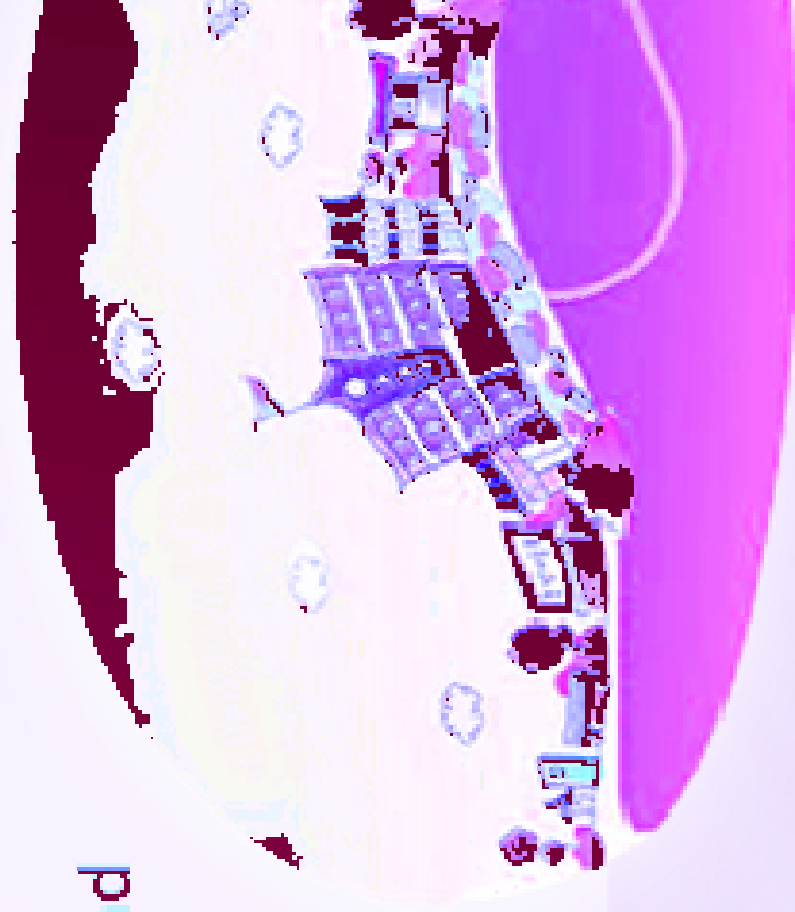
• **Develop a summer school program** that offers a summer school program, summer activities and peer-to-peer interaction and understanding through cultural, educational and personal experiences

• **Develop exchange between ASL-Meekins**

main goal

• **Compare ASEF summer school from 2008 and at the school in 2010**

• **Expand the scale of ASEF summer school**
• **Increasing the number of attendees and period of the program**



Major program

Provide a good opportunity to learn Korean tradition and culture by using various resources available at Woosuk University and Jeonbuk Province

Major Course

• Major course will be determined by ASEF and Woosuk University

Elective Courses

- Basic Korean language
- Taekwondo
- Korean traditional foods
- Understanding Korean folk music
- Oriental medicine and Pharmacy (Dept of Oriental Medicine & Oriental



Purpose

- As a member of the international society, ASIS plays an important role in promoting international friendship and cooperation.

Main programs

1. Domestic volunteer service
2. Overseas volunteer service

in programs

Domestic volunteer service

Korean volunteers will participate in voluntary service with international students from all over the world through cooperation with the local

universities, religious organizations, and organizations, etc.

Purpose

- To improve the ability of Korean volunteers by providing practical education.
- To enhance the communication and bonding between international students and domestic volunteers.
- To connect the volunteers with the Department of Education, and Special Education

Operation plan for main program

- Conducting voluntary service program connected with the Department of Education, and Special Education, and
- Connecting with the Department of Education, and Special Education

in programs

Overseas volunteer service

Program for Korean students

Purpose

- To learn how to tolerate and coexist through multi-cultural experiences
- To cultivate autonomy and democracy through living in a group
- To visit overseas cultural facilities
- To spread out Korean language and culture

Voluntary service program

- Health work: regular, health checkups and vaccination
- Educational: environmental improvement
- Distribution: to overseas volunteer centers and NGOs

2019.10.10 and 10.11

2. Overseas volunteer service

- Program for Korean students

To encourage adolescence to feel connect

- Operating overseas voluntary service and culture visiting universities of ASEM countries (for 1~2)
- Culture awareness program for adolescence (to Korean language, etc.)

- Requests for co-operation with ASEF

- Inducing ASEM countries to participate in voluntary interchange program
- Organizing the society for presidents of universities embody the program

Combined Education System

- Undergraduate (3.5 years) + Overseas internship
- ~~Graduate (1 year) program~~
- Making the most of Woosuk Society
- Operating overseas internship programs in coop

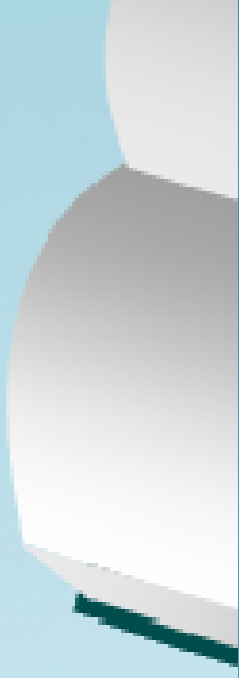
KOICA

Expanding lectures taught in English

2012	2014	2016
20%	40%	over 50%

Education
System

Strengthening foreign faculty invitation



5

Local Students

Language + Regional
+ Majors

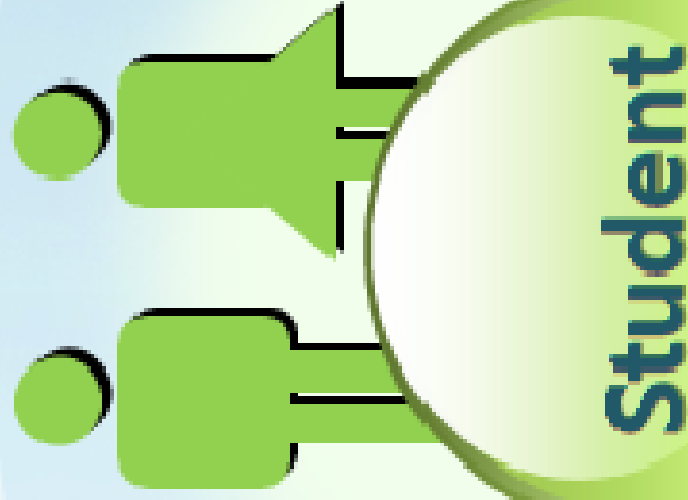
ment of outstanding

ive and differentiated
on

arm visiting study
boration with foreign

Foreign Students

- **ASEM member-nations**
 - Attract foreign students government-funded scholarship
- **KOICA**
 - Attract the next generation of global leaders from Central and Southeast Asia, South America
- **Maintain 20% of the total**



Asia and Latin America

of the total

English as an official language

- Setting up Korean/English administration system

Establishment of
friendly cooperation

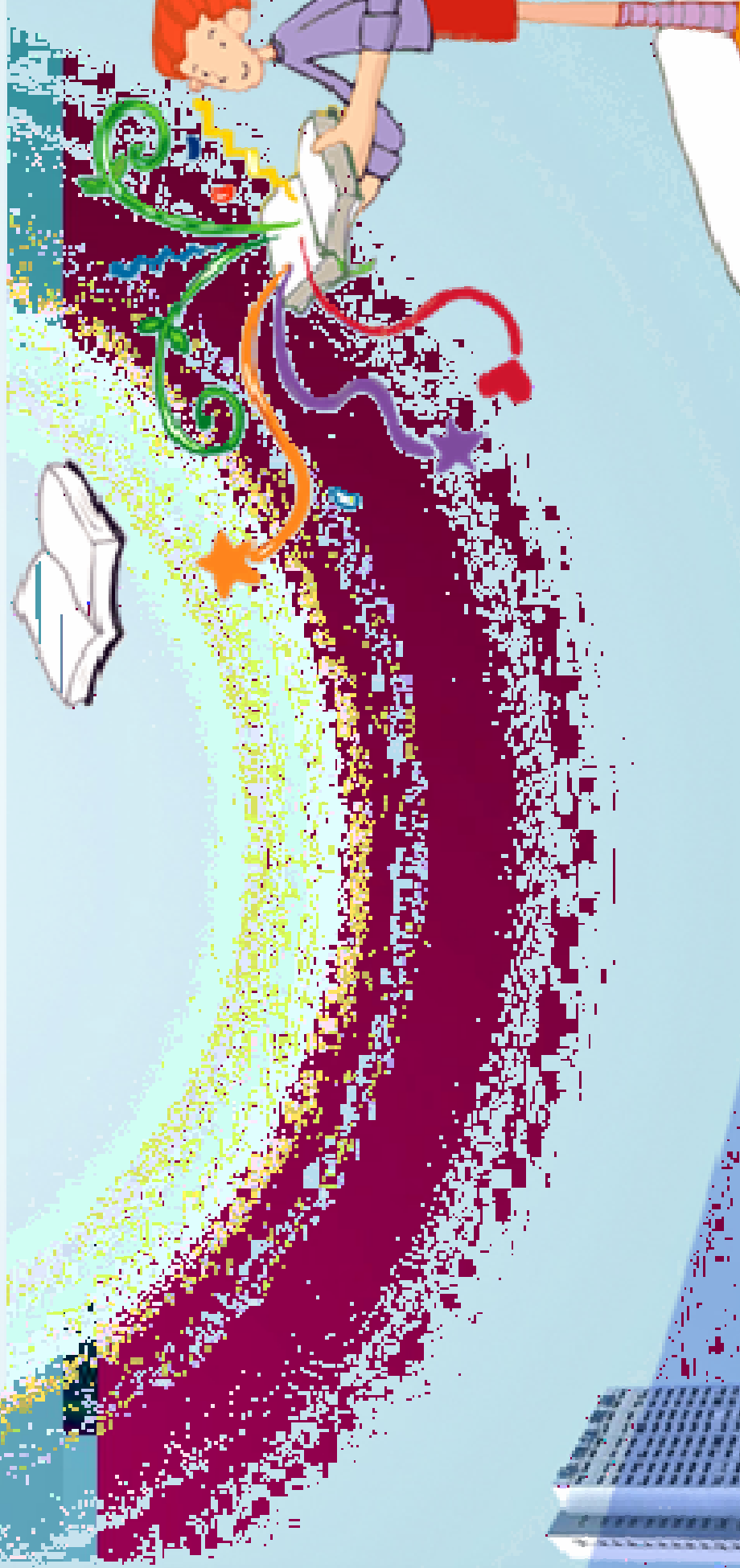
Making
Wood

- Fund-Raising
- Supportive and employment

ASIS
administration

Co-operation with ASEF

- For establishing ASIS in 2nd campus of Woosuk strong and steady co-operation with ASEF in education the people-to-people exchange program is mandatory



Thank you

