

مركز الدراسات الإستراتيجية
الجامعة الأردنية



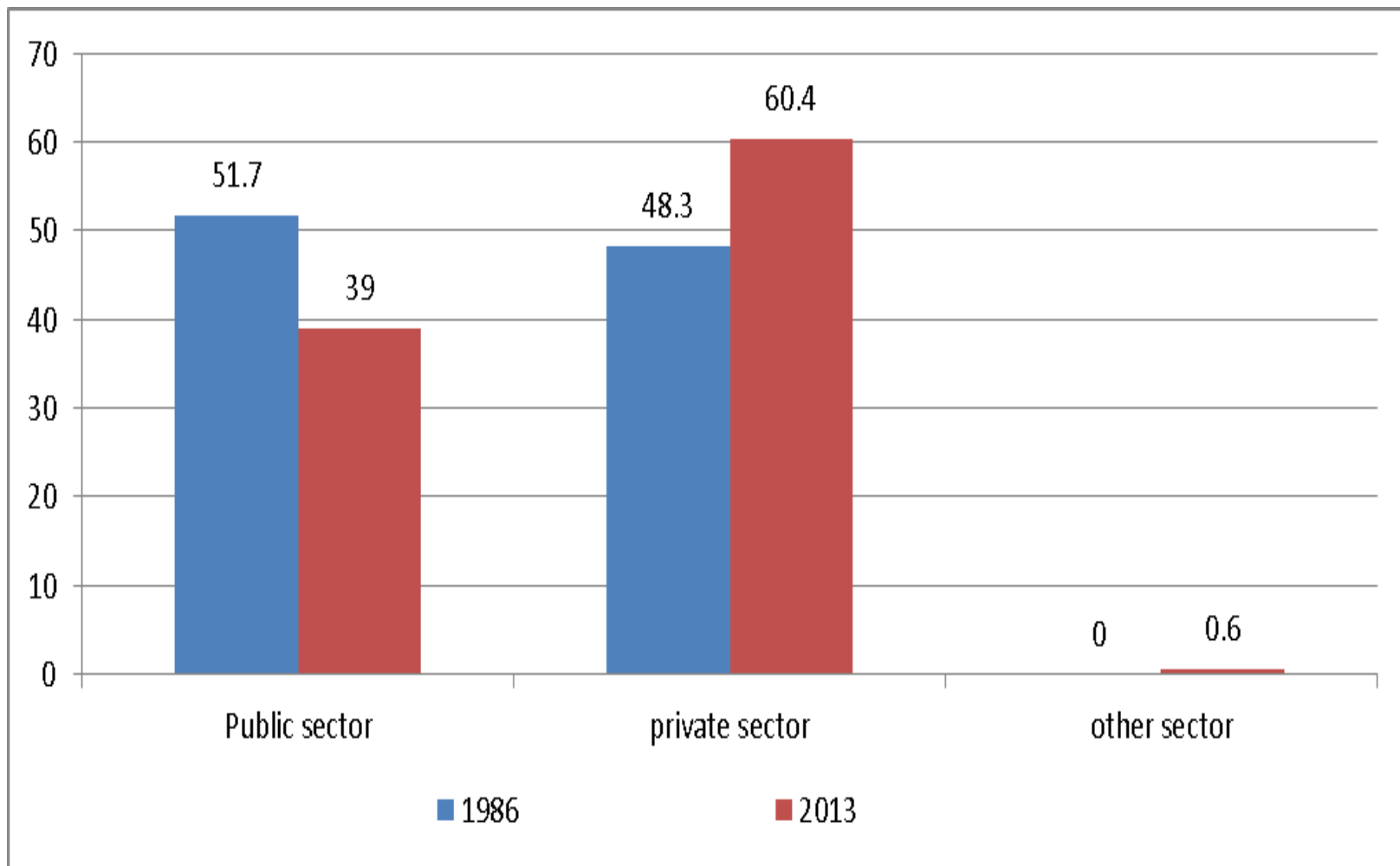
Center for Strategic Studies
University of Jordan



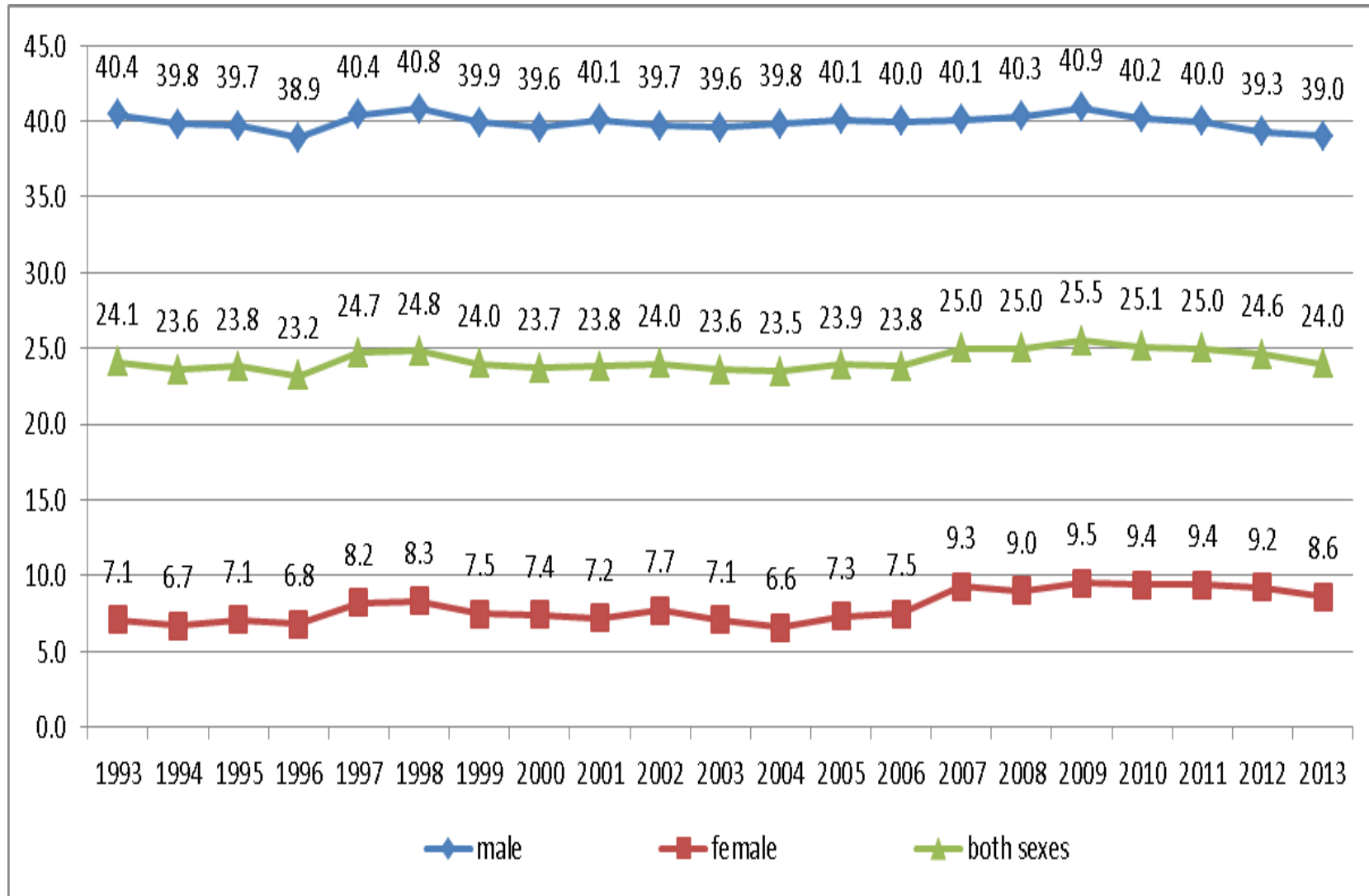
Recent Developments in the Jordanian Labour Market

Dr. Musa Shteivi
Center for Strategic Studies
University of Jordan

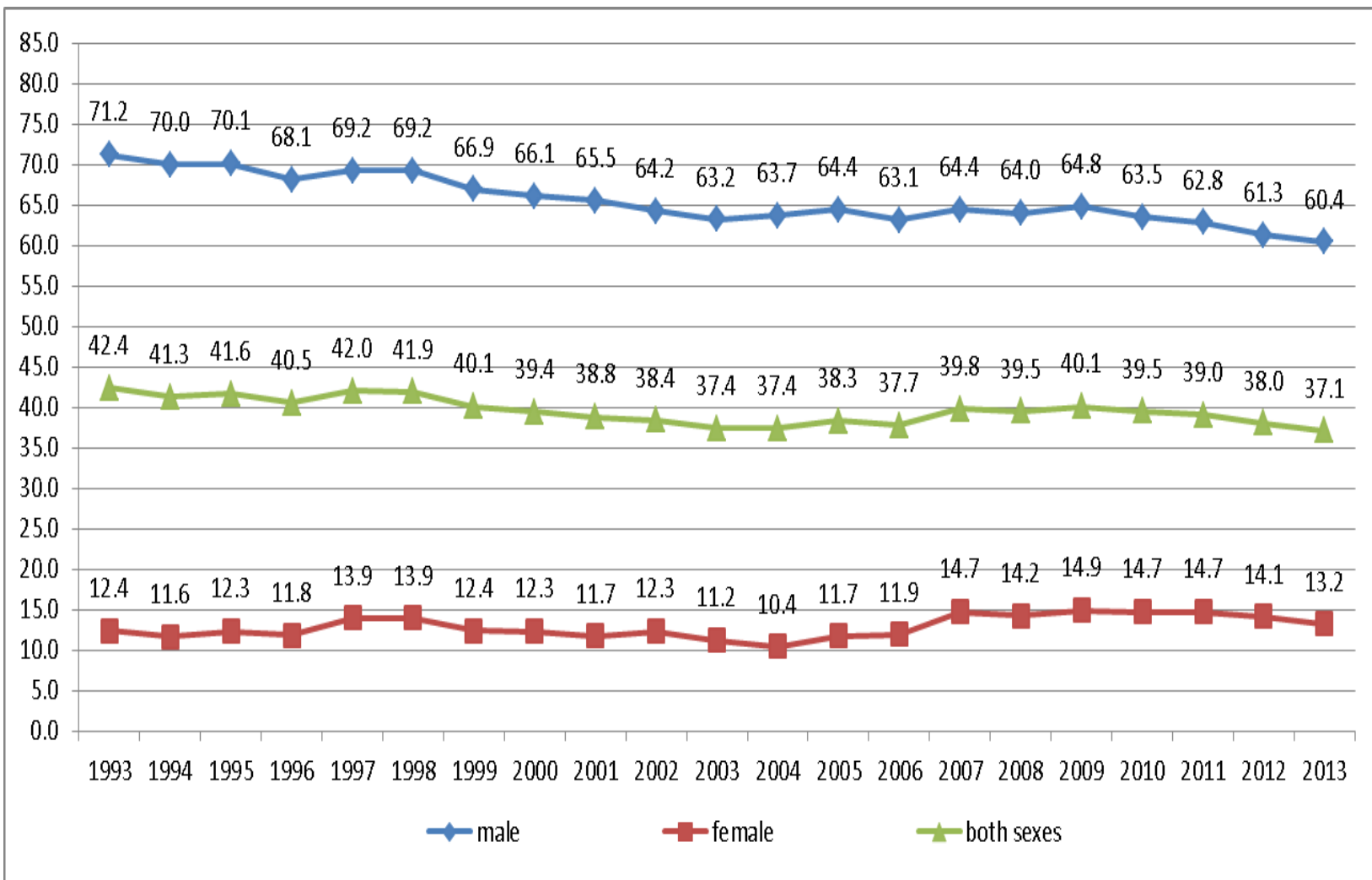
Distribution of Jordanians employed by the labour sector



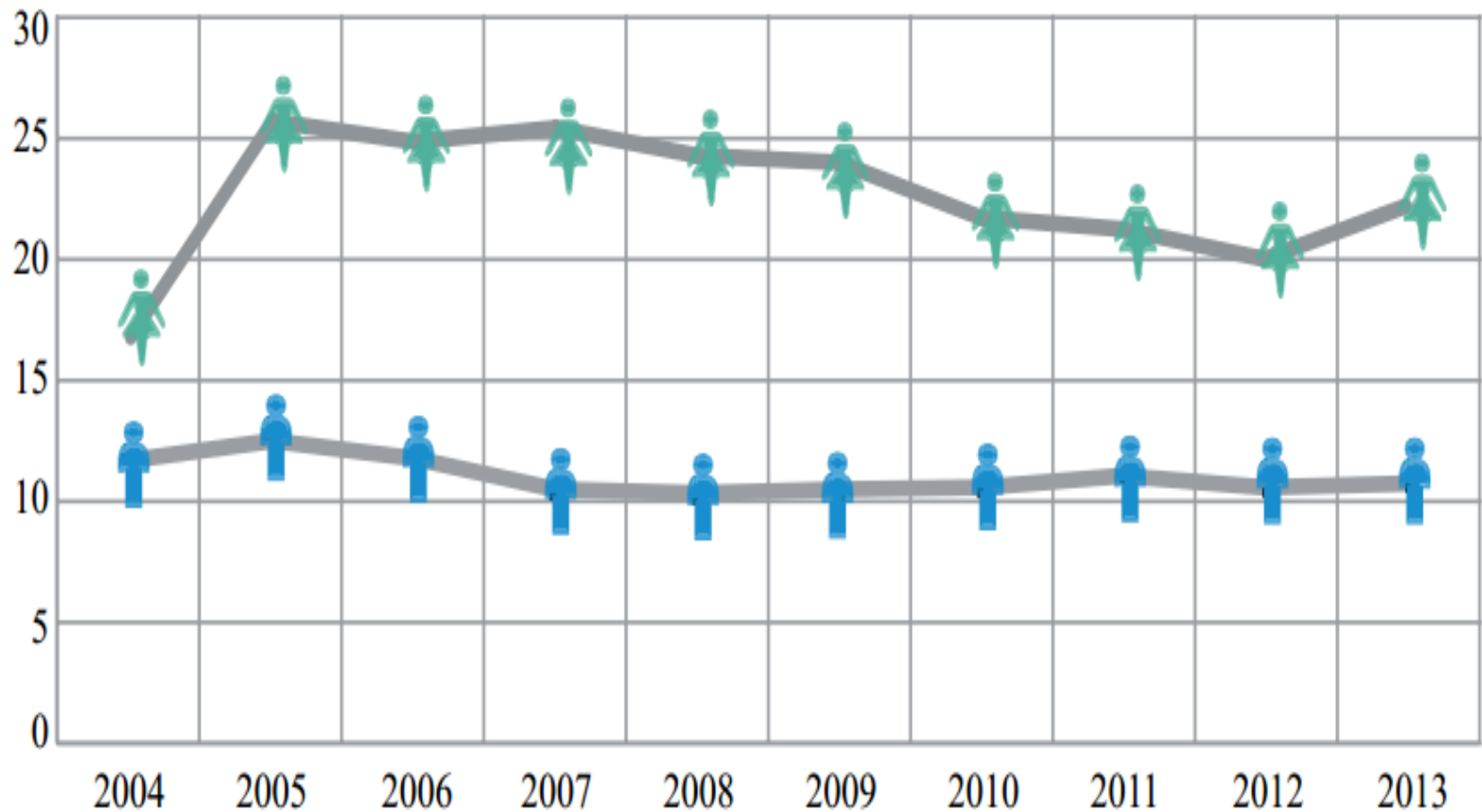
Crude Economic Activity Rate



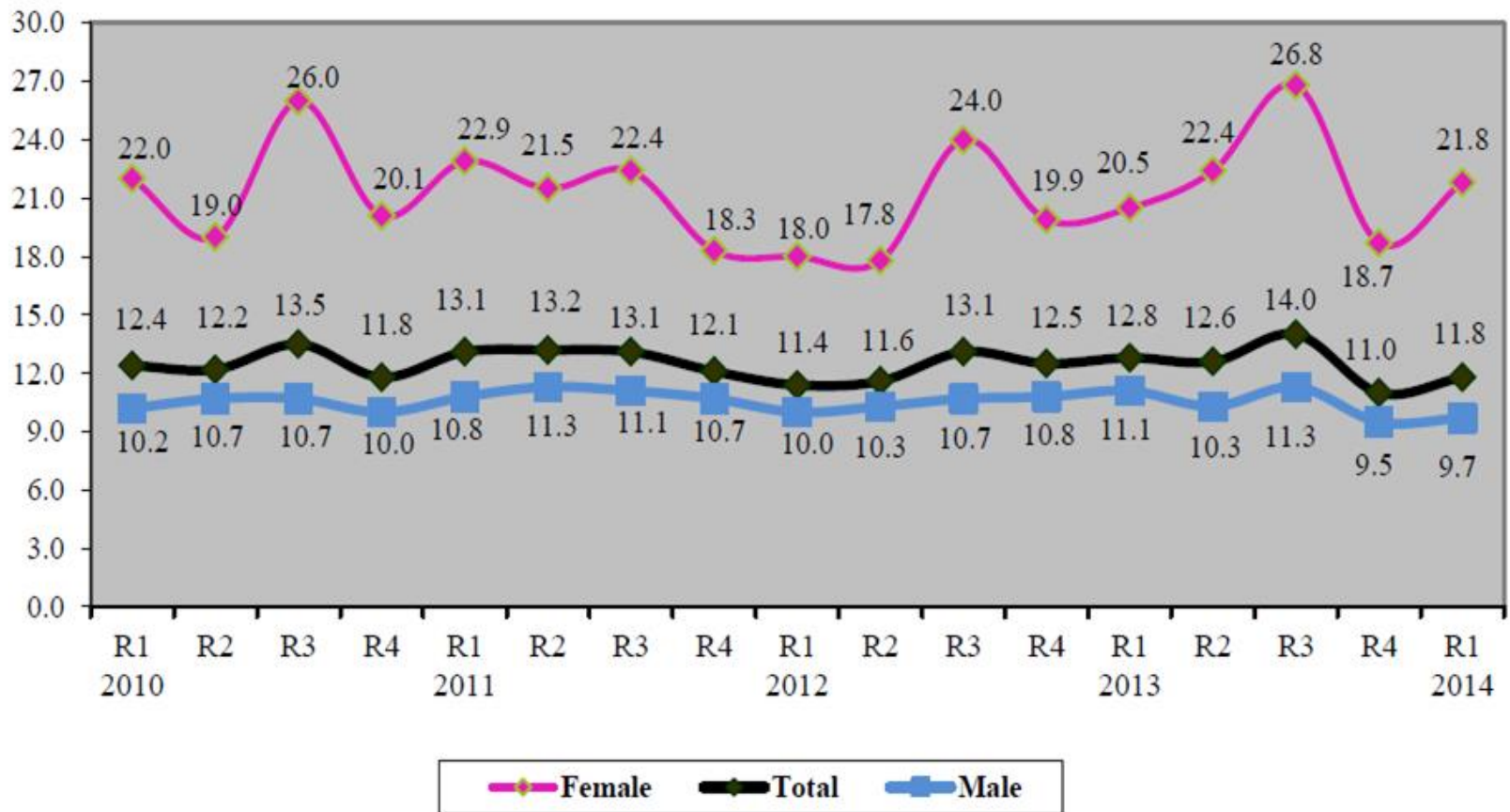
Refined Economic Activity Rate



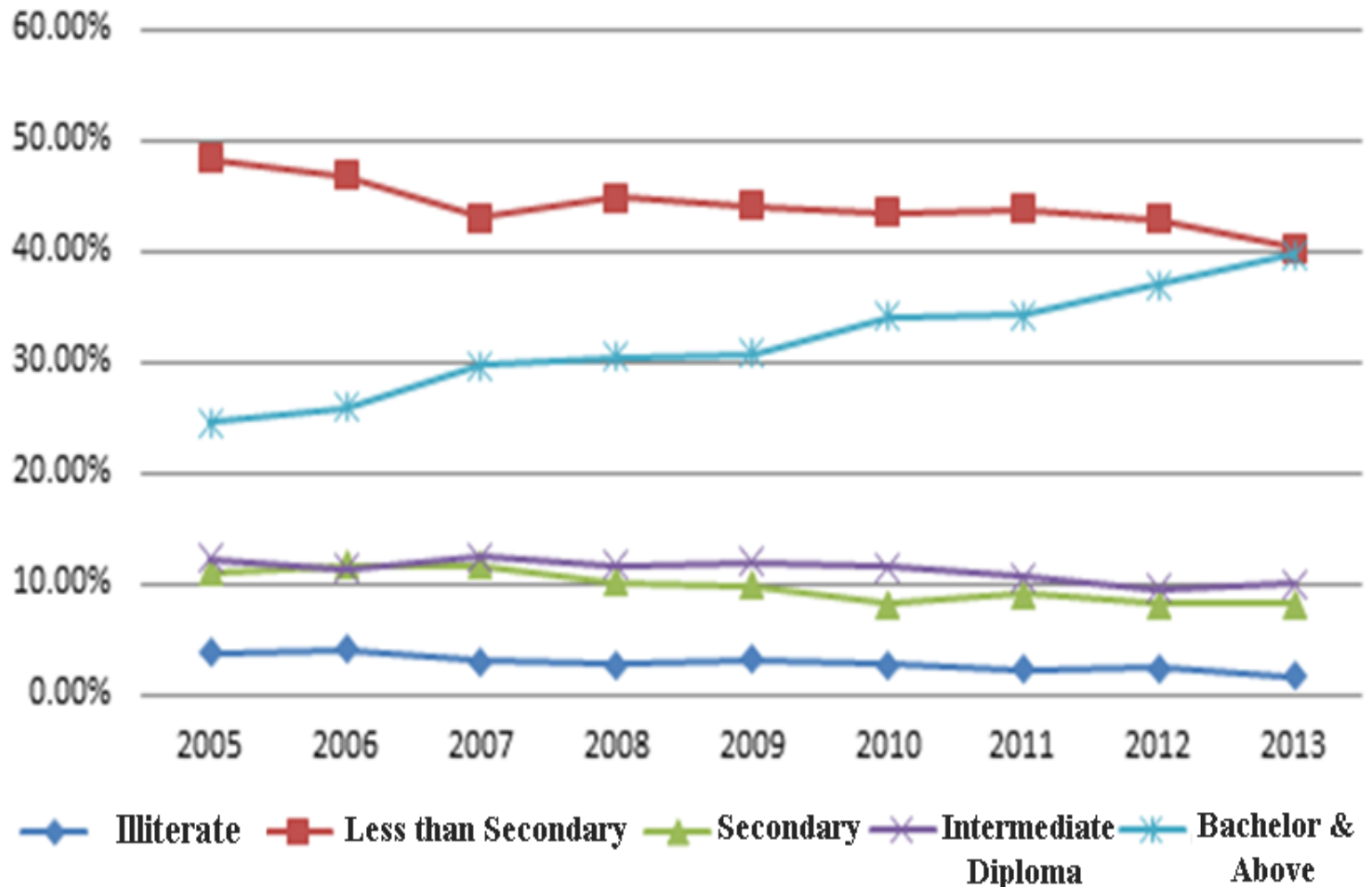
Unemployment Rates Among Jordanian Labour Force (15+) Years of Age by Sex



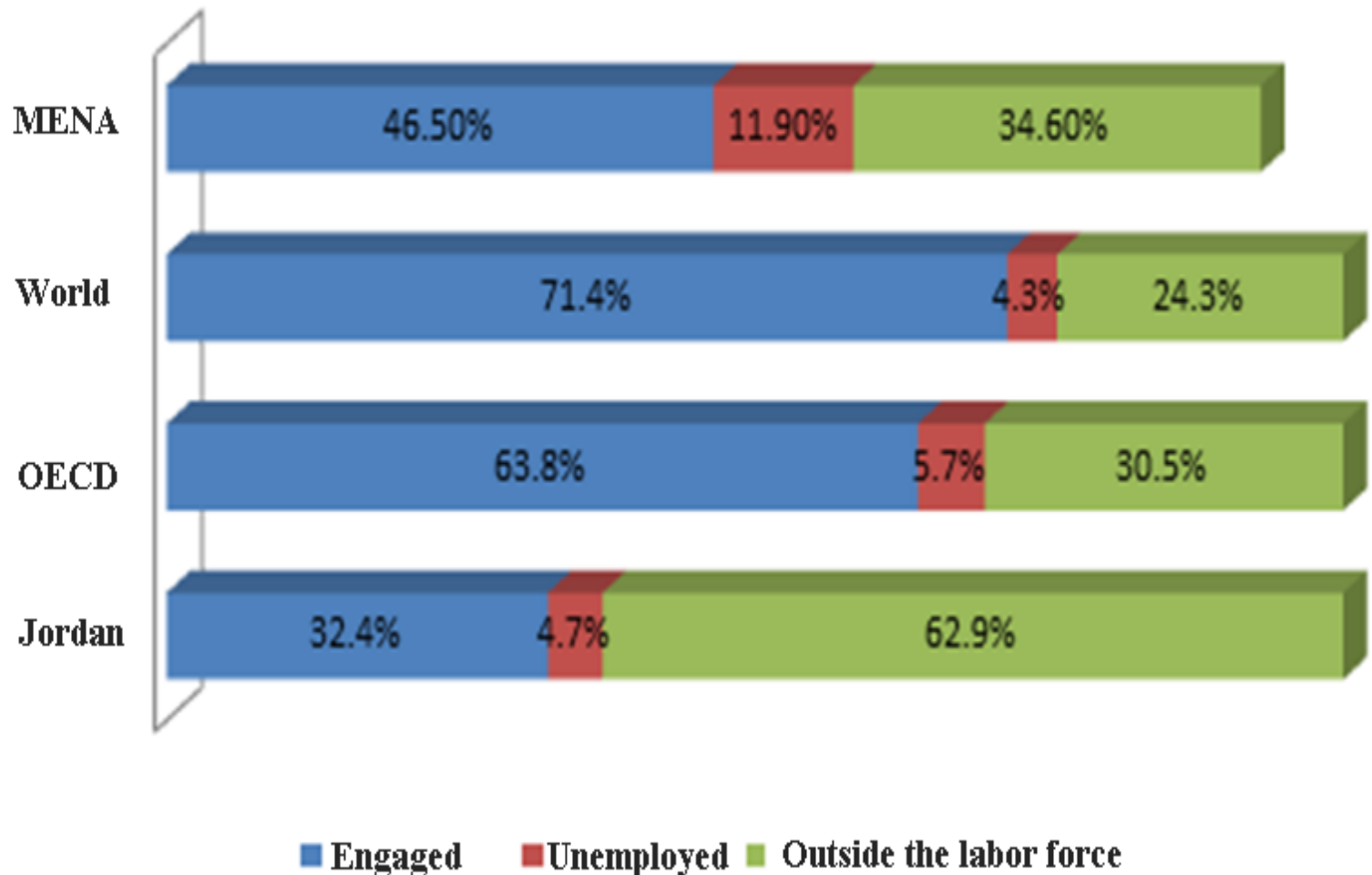
Total Unemployment Rates By Sex & Quarters



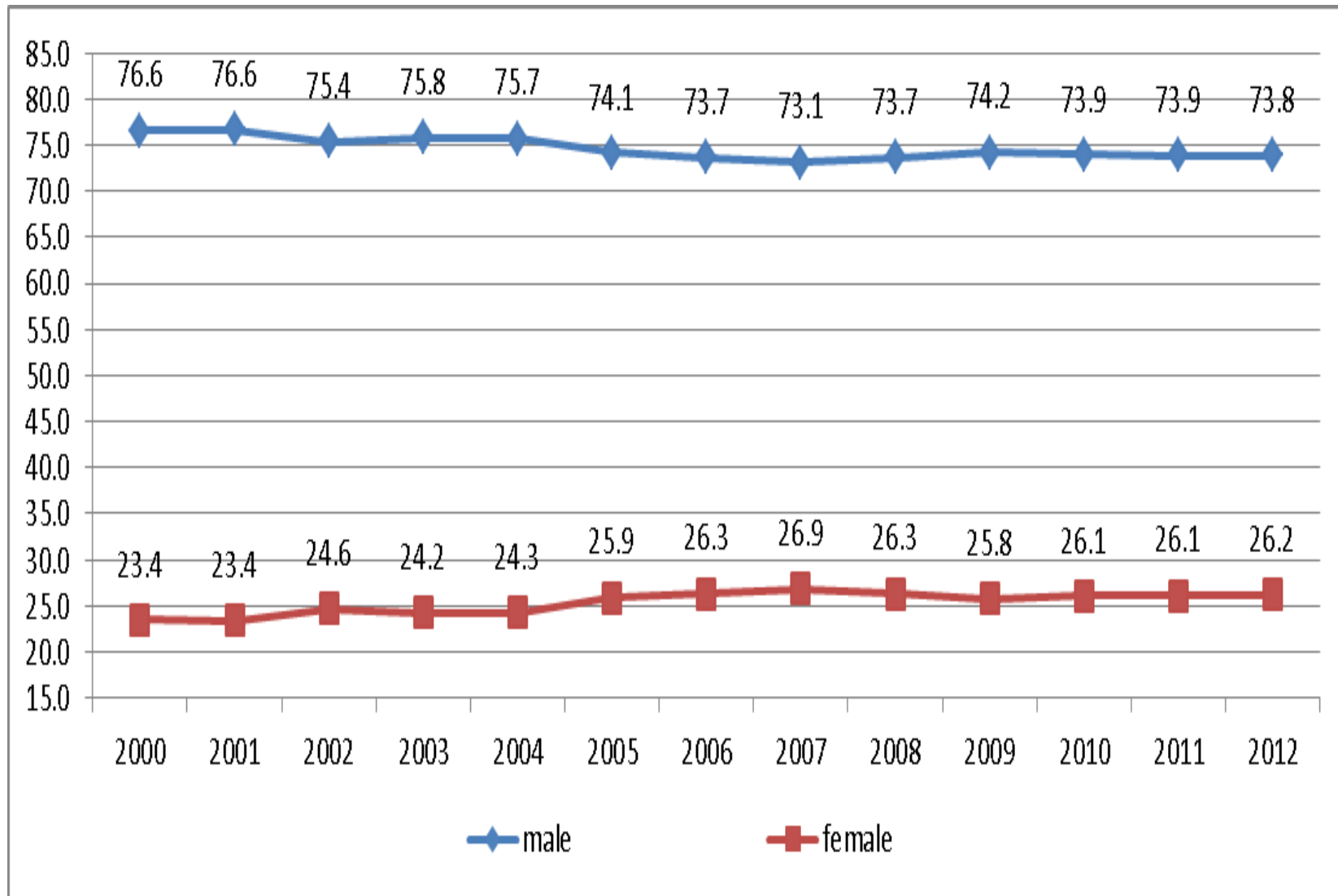
Distribution of unemployment (15-64) by educational Attainment



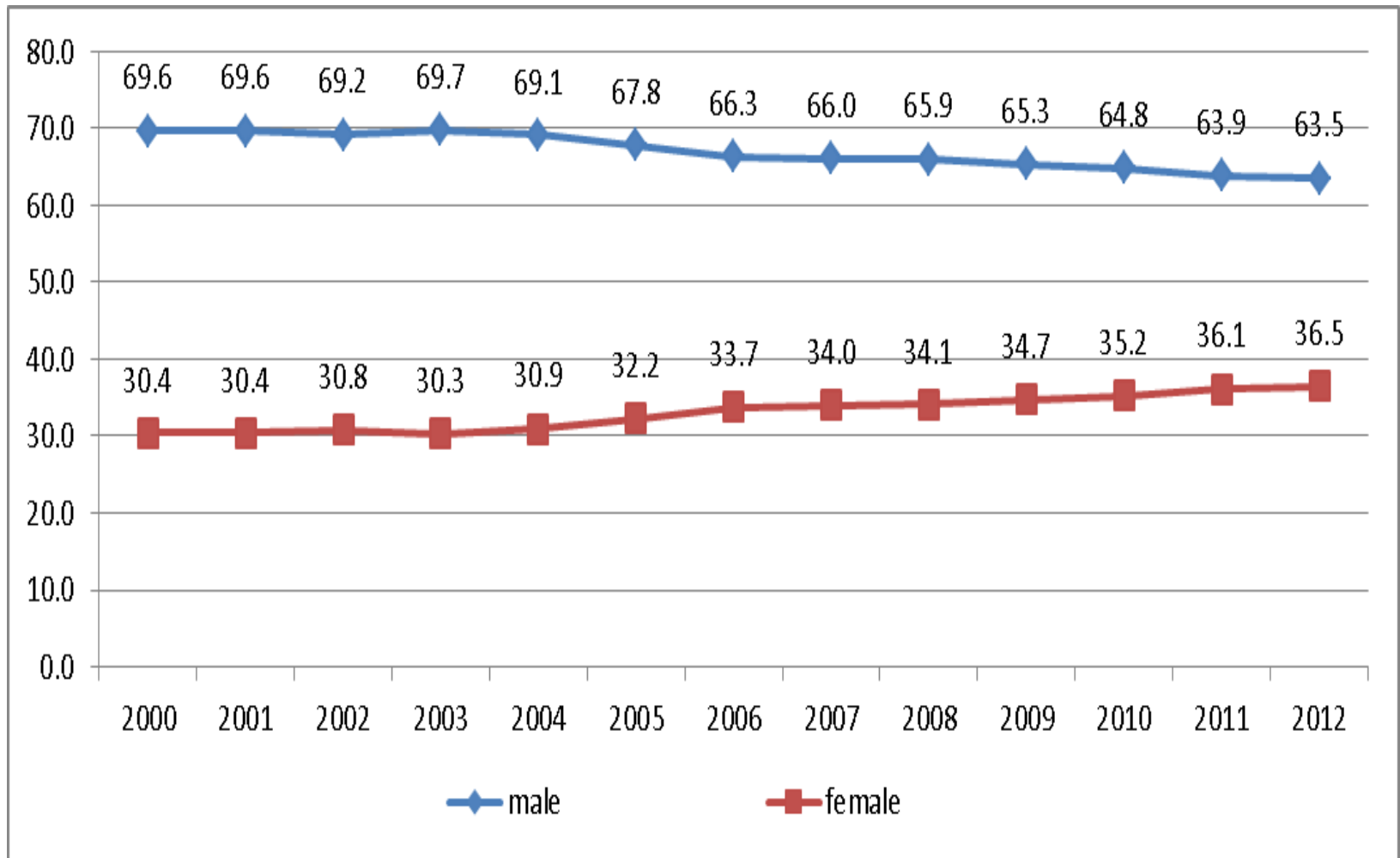
percentage of working-age population in Jordan compared with other countries (2012)



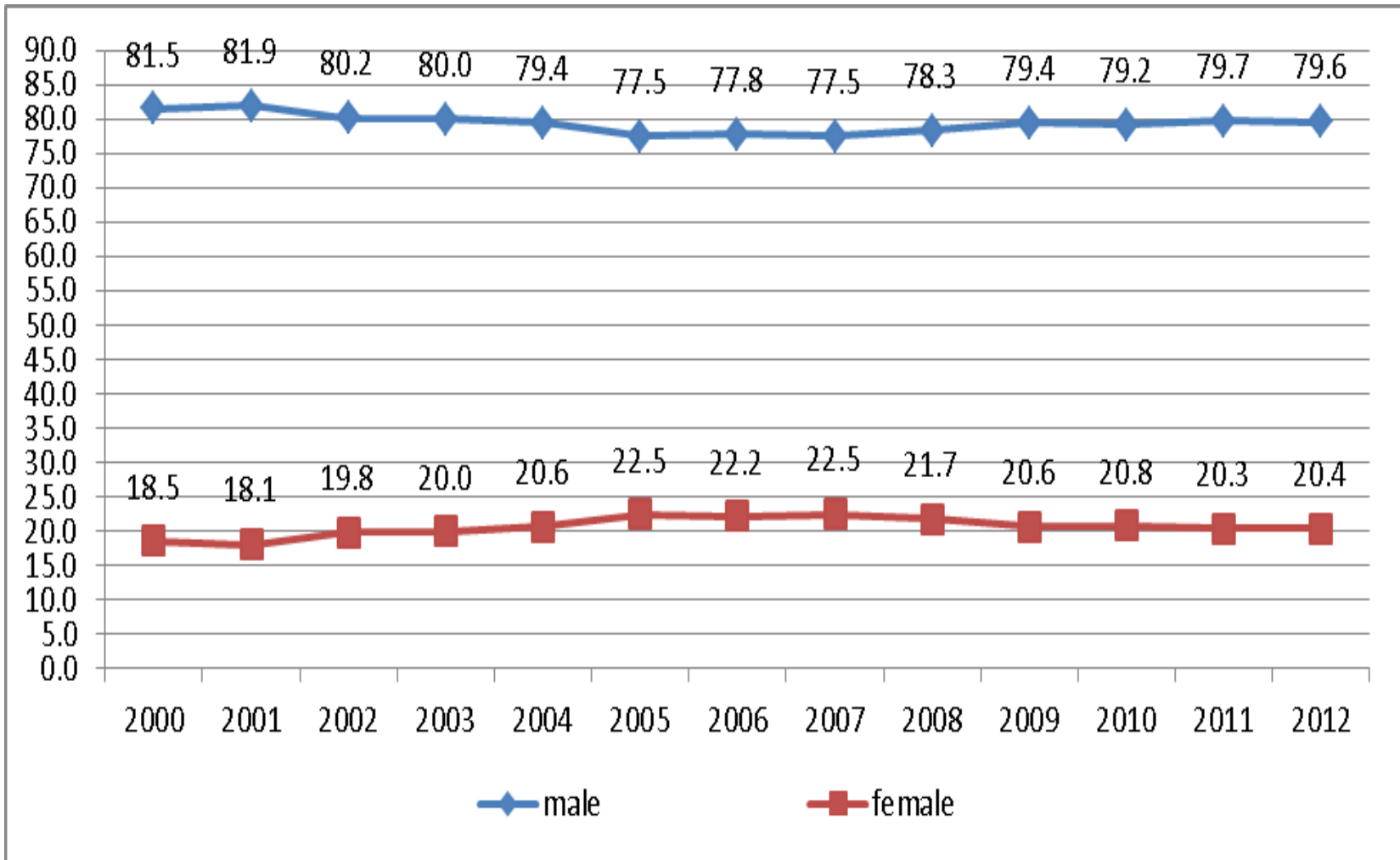
Percentage of wage workers by Sex



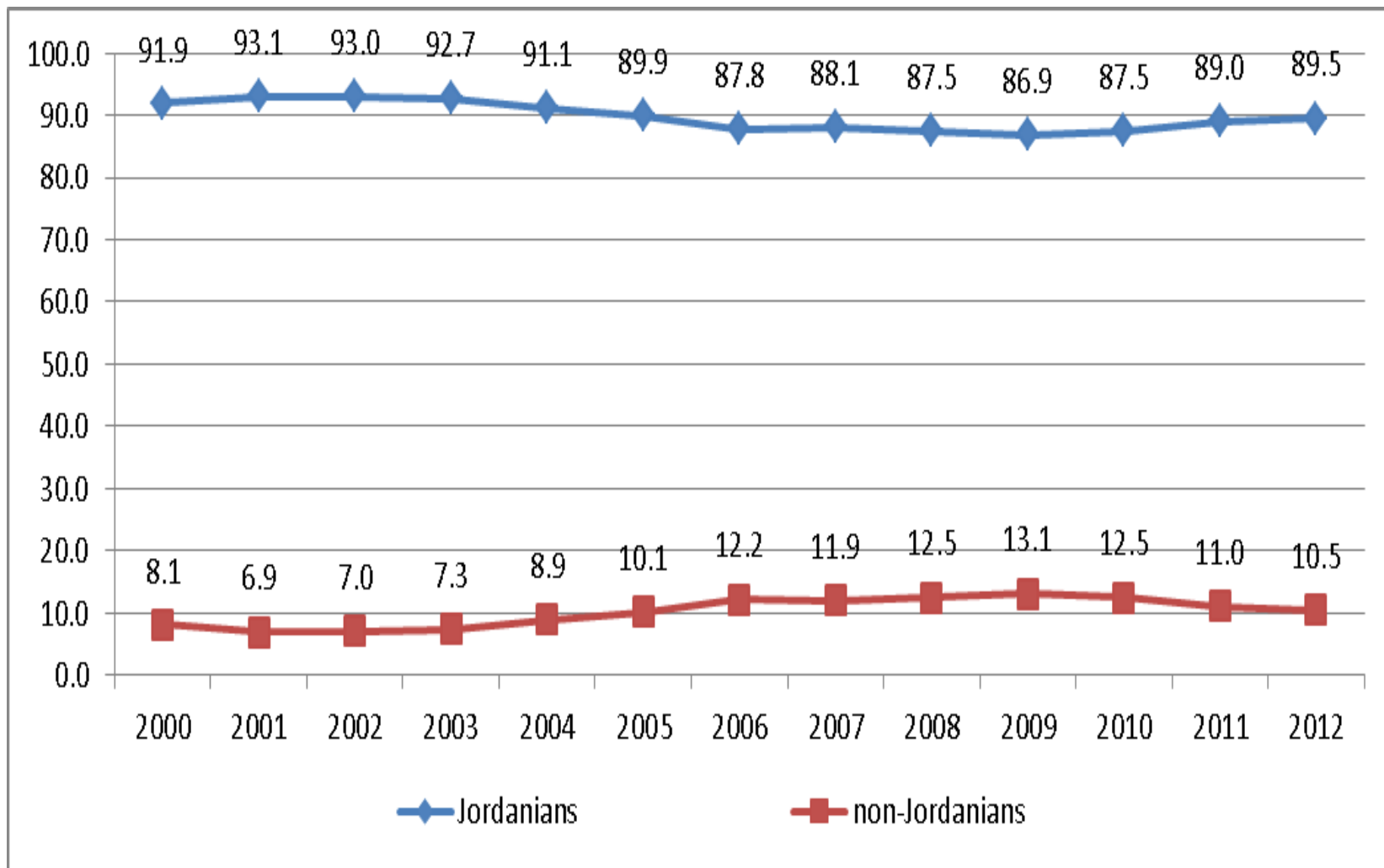
Percentage of wage workers in the public sector by sex



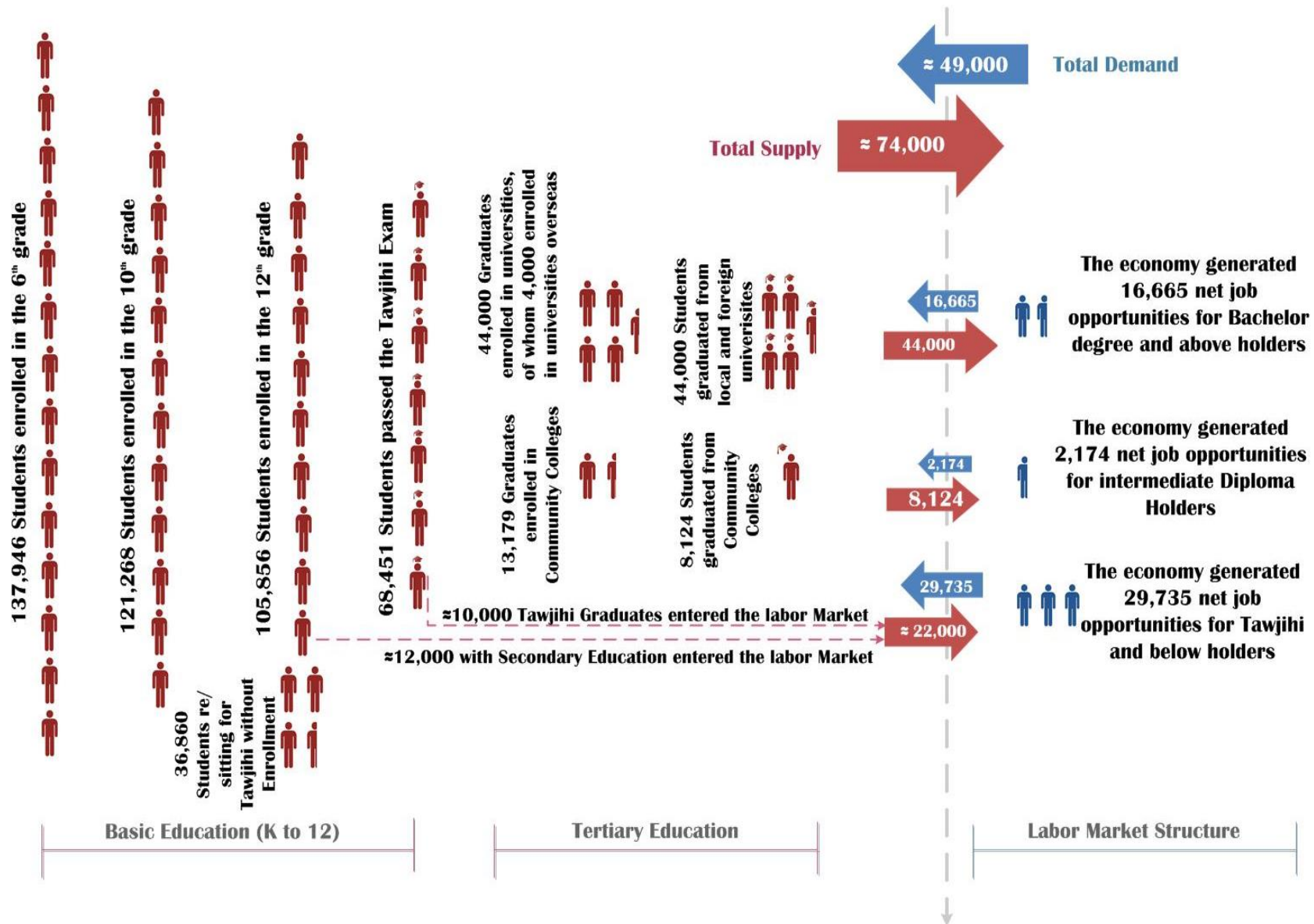
Percentage of wage workers in the private sector by sex



Percentage of wage workers of the public sector and private by nationality



Jordan's Labor Market Mismatch in 2013



Estimates of economic Activity, employment and unemployment of Jordanians and Syrian refugees in four governorates, QIII 2013

Governorate	Economic Activity Rate	Active Labour Force	Employed	Unemployed	Unemployment Rate
Mafraq					
Jordanians	36.2%	72 141	62 469	9 672	13.4%
Syrian Refugees (excluding Za'atari)	48.5%	17 083	6 020	11 062	64.8%
Irbid					
Jordanians	37.3%	292 325	252 683	39 642	13.6%
Syrian Refugees	48.5%	35 690	12 578	23 112	64.8%
Zarqa'					
Jordanians	35.7%	202 843	177 729	25 115	12.4%
Syrian Refugees	48.5%	14 063	4 956	9 107	64.8%
Amman					
Jordanians	36.9%	604 897	534 338	70 558	11.7%
Syrian Refugees	48.5%	41 426	14 600	26 827	64.8%
Four Governorates					
Jordanians	36.5%	1 172 206	1 027 219	144 987	12.8%
Syrian Refugees	48.5%	108 262	38 154	70 108	64.8%

Source: ILO.

Jordanian labour market evolution in four governorates, 2010-2013

	2010 Average	2013 Average	Total Change	Average Annual Change
Economically Active	(Rounds 1-3)	(Rounds 1-3)		
Mafraq	65 006	72 141	7 135	3.7%
Irbid	263 072	292 325	29 254	3.7%
Zarqa	216 324	202 843	-13481	-2.1%
Amman	628 778	604 897	-23881	-1.3%
Total	1 173 180	1 172 206	-974	0.0%
Employment				
Mafraq	55 581	62 469	6 888	4.1%
Irbid	229 834	292 325	62 491	9.1%
Zarqa	191 167	177 729	-13438	-2.3%
Amman	553 365	534 338	-19027	-1.1%
Total	1 029 947	1 066 861	36 914	1.2%

Source: ILO

	2010 Average	2013 Average	Total Change	Average Annual Change
Unemployment				
Mafrq	9 425	9 672	247	0.9%
Irbid	33 237	39 642	6 405	6.4%
Zarqa	25 157	25 115	-43	-0.1%
Amman	75 413	70 558	-4854	-2.1%
Total	143 233	144 987	1 754	0.4%
Unemployment Rate				
Mafrq	14.5%	13.4%	-1.1%	-
Irbid	12.6%	13.6%	0.9%	-
Zarqa	11.6%	12.4%	0.8%	-
Amman	12.0%	11.7%	-0.3%	-
Total	12.2%	12.4%	0.2%	-

Source: ILO



Thank You