



German-Jordanian Partnerships as Part of Strategic Internationalisation at BTU Cottbus

Dr. Nina Wolfeil, Director International Office

DIES Seminar Amman/ Jordan

13th of November 2012

Discussion Panel: How to Manage University Partnerships?

OUTLINE

- 1. BTU Cottbus at a Glance**
- 2. Strategic Institutional Approach Towards Internationalisation**
- 3. German-Jordanian Partnerships**
- 4. Outlook – Opportunities and Challenges**

01. BTU at a Glance

foundation: **15 July 1991** · **6.844** students, including **1.190** international students from 93 countries · **119** professorships ·

594 scientific staff (313 externally funded) · **566** non-scientific staff, (51 externally funded)

University Budget 2011 (including reinforcement of staff funds): **51.8 million €**
external Funding 2011: **34.0 million €**

FACULTIES

- Faculty 1 – Natural Sciences, Mathematics and Computer Science
- Faculty 2 – Architecture, Civil Engineering and Urban Planning
- Faculty 3 – Mechanical, Electrical and Industrial Engineering
- Faculty 4 – Environmental Sciences and Process Engineering

THE CAMPUS

Total campus area: approx. 300,000 m² ·

Main working space: approx. 82,000 m²



The Main Building with its striking entrance portal was fully renovated in 2008

01. BTU at a Glance

Scientific research at BTU is strategically concentrating on **five focal areas**: Environment, Energy, Materials, Building, as well as Information and Communication Technology. These five areas of academic focus constitute, however, only one component of BTU's overall research activities, in which more than one hundred university Chairs are actively involved.



Nature's secrets revealed: BTU has the lead in the German Research Foundation (DFG) collaborative special research programme Transregio 38, which explores the origins of ecosystems. BTU has its own six-hectare openair laboratory on a section of the former open cast mine Welzow-Süd.

FOCAL AREAS



ENVIRONMENT



BUILDING



ENERGY



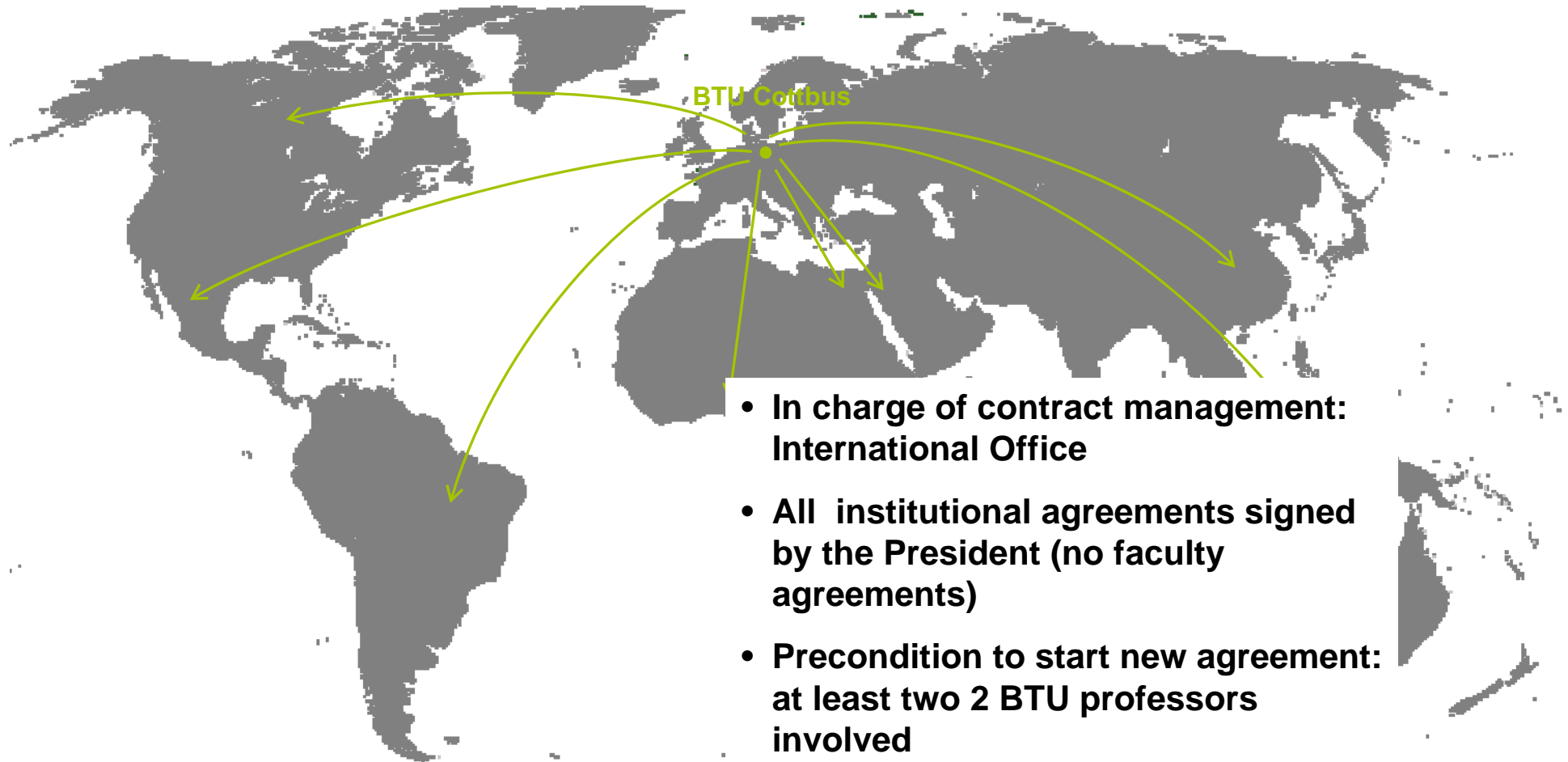
MATERIALS



INFORMATION AND
COMMUNICATION
TECHNOLOGY

01. BTU at a Glance

The University maintains scientific co-operation with around **145 universities** across the world, whilst fostering student and academic exchanges with over 110 partner universities.



- **In charge of contract management: International Office**
- **All institutional agreements signed by the President (no faculty agreements)**
- **Precondition to start new agreement: at least two 2 BTU professors involved**

01. BTU at a Glance

High Share of International Students

- 17.4 % of our student population come from abroad
- Main countries of origin: China, Poland, India, and Russian Federation

9 International Study Programmes

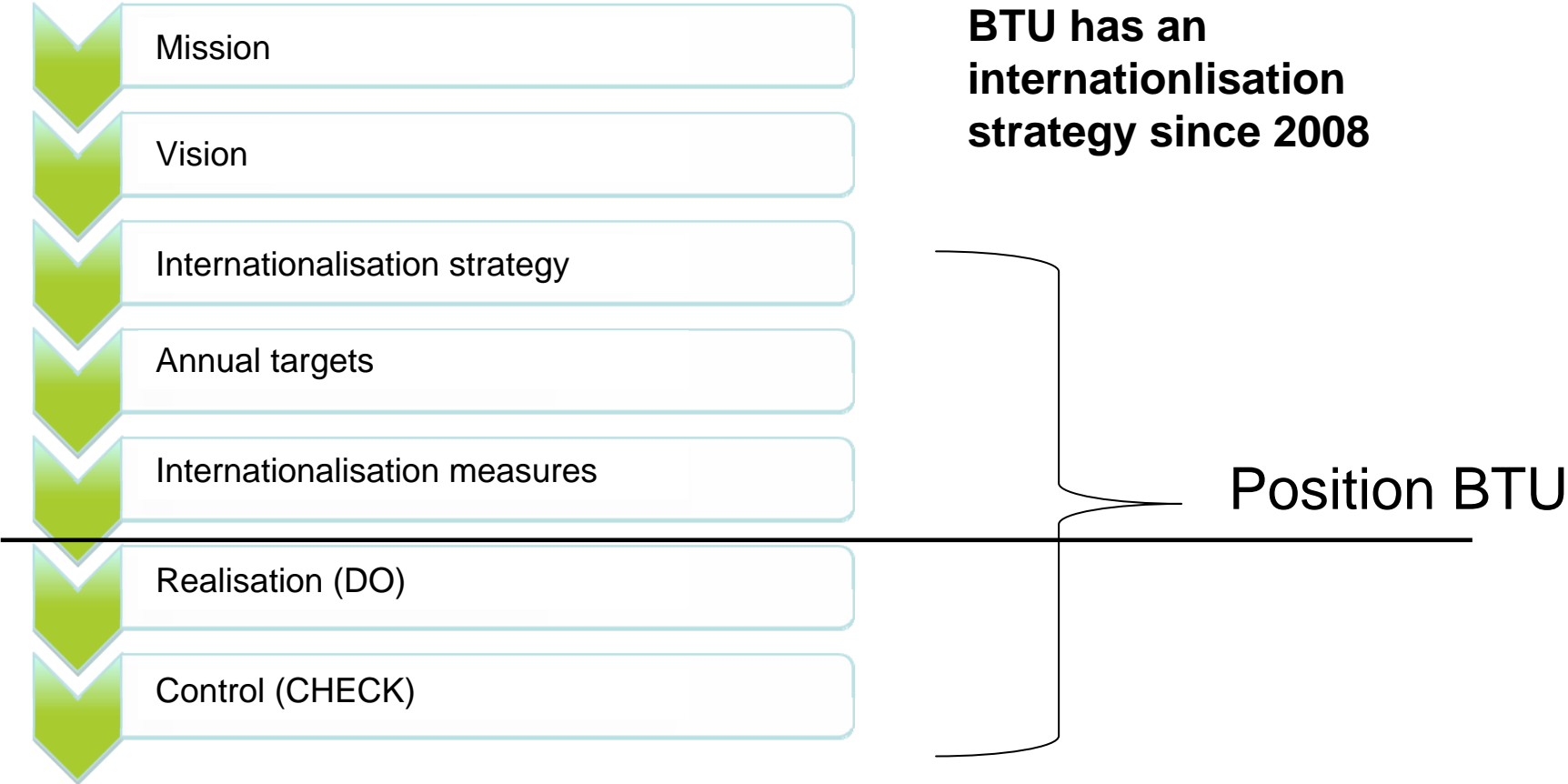
- First BSc in Environmental and Resource Management 1998
- Innovative Programmes: Environmental and Resource Management, World Heritage Studies, Forensic Sciences and Engineering
- 33% of international students

Internationalisation of Teaching

- 2008 internationalisation strategy
- 2010 participation in the HRK-internationalisation audit
- 2011 catalogue of measures/ ERASMUS monitoring



02. Strategic Institutional Approach Towards Internationalisation



02. Strategic Institutional Approach towards Internationalisation

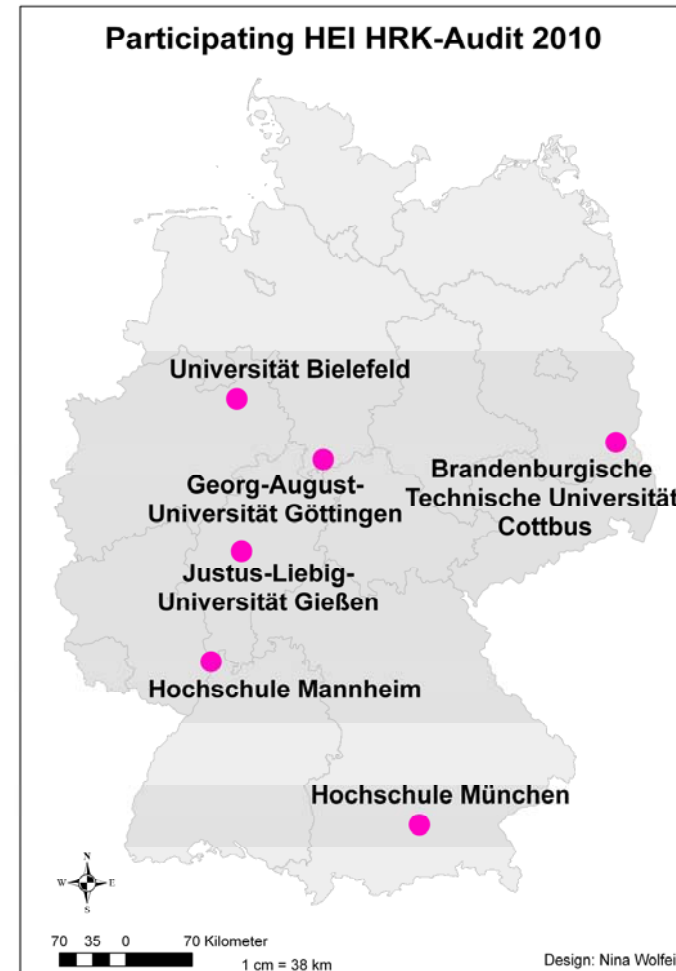
HRK Audit „Internationalisation of HEI“

Scope of Service

- Service offered by the German Rectors' Conference for its member institutions
- Aim: to help HEIs in developing and improving their internationalisation strategy
- Individual approach

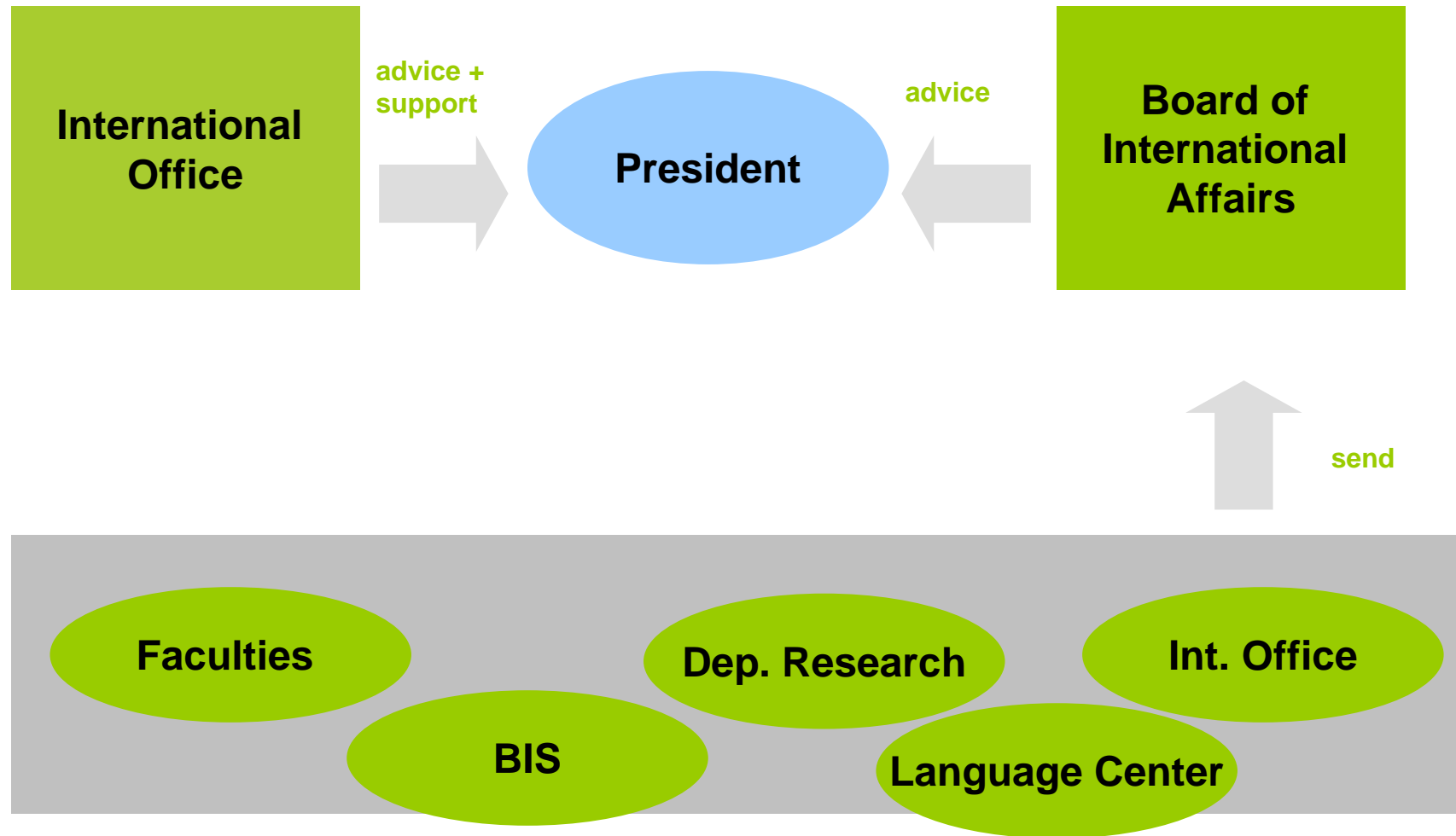
BTU Participation 2010-2013

- Participated as one of six HEIs in a pilot stage
- From July 2012 onwards: participation as one of five HEIs in the re-audit internationalisation



02. Strategic Institutional Approach Towards Internationalisation

Structural Changes upon HRK Audit 2010



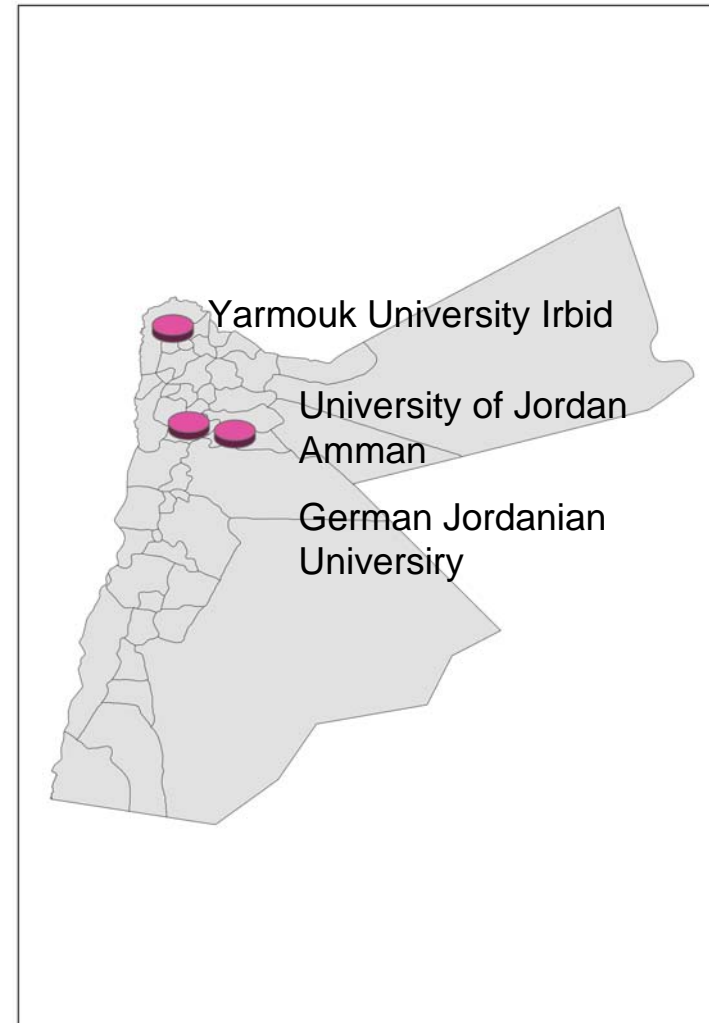
02. Strategic Institutional Approach towards Internationalisation



- Six Objectives/ more than 30 measures
- Senate Decision to be expected 12/2012

03. German-Jordanian Partnerships

**The MENA Region is one
of the selected
geographical region
in BTU's
internationalisation
strategy**



03. German-Jordanian Partnerships



University Partnerships in the MENA Region

Country	University	Since	Area of Cooperation
Egypt	Cairo University	2007	Architecture
Egypt	Helwan University Cairo	2012	Heritage Studies
Syria	University of Aleppo	2004	Architecture, Urban Planning
Syria	WIU Wadi International University	2010	Architecture, Dual Degree
Syria	University of Damascus	2010	Architecture, Environmental Studies
Jordan	German Jordanian University	2010	Student Exchange (ERM), Environmental Studies
Jordan	University of Jordan, Amman	1999	Environmental Studies
Jordan	Yarmouk University Irbid	2000	Environmental Studies

03. German-Jordanian Partnerships



Brandenburgische
Technische Universität
Cottbus

Example of a project with Yarmouk University Irbid

Topic: „Establishing a Teaching Center for Cultural Heritage in the Hashemite Kingdom of Jordan“

Coordinators: Prof. Dr. Dr. h.c. (NMU Dnepropetrovsk) Michael Schmidt, Chair for Environmental Planning and Dean of the Faculty of Environmental Sciences and Process Engineering, Prof. Ziad Al-Saad, Yarmouk University

Institutional Partners: Brandenburg University of Technology Cottbus, Yarmouk University Irbid, UNESCO World Heritage Center Paris

Funding: 2003-2006 TEMPUS



Source: <http://www.erm.tu-cottbus.de/tempus/activities.html>

03. German-Jordanian Partnerships

Cultural Heritage Management Cooperation

Aim of the Project: „Establishing a Teaching Center for Cultural Heritage in the Hashemite Kingdom of Jordan“

1. Establishment of an MA programme Cultural Resource Management at Yarmouk University
2. Training courses for heritage professionals
3. Develop teaching modules in cultural heritage management for schools
4. Preparation of a conservation and management plan for the site of Abila
5. Preparation of guidelines for an integrated concept for archaeological and natural sciences




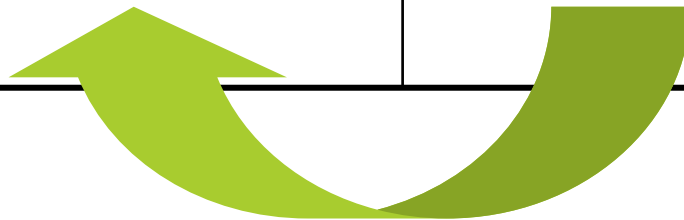
3rd Tempus Workshop in Irbid 2006

Source: <http://www.erm.tu-cottbus.de/tempus/photo/Thumbnails.html>

03. German-Jordanian Partnerships

GJU – BTU EXample of Student Exchange

<p>الجامعة الألمانية الأردنية German Jordanian University</p> 	<p>b-tu Brandenburg University of Technology Cottbus</p>
<p>WS 2010/11: 2 BTU students WS 2011/12: 3 BTU students WS 2012/13: 2 BTU students Advantage: academic calendar fit + organisation</p>	<p>• 0 Incoming Students from GJU</p>



One Way Street?

04. Outlook – Opportunities and Challenges



Brandenburgische
Technische Universität
Cottbus

Cooperation between Jordanian and German partners

Opportunities

- + Good funding situation allows start of new initiatives
- + Improved management structures
- + Highly-appreciated senior partner in regional (MENA) network projects
- + Safe environment
- + Academic level/ foreign language competency
- + Attractive destination for BTU students

Challenges

- Personalised approach → continuity less embedded into structures
- Hierarchical Approach
- Sustainability of third-party funded projects after funding period
- Political stability – funding rather available for more instable countries
- Market cycle/ presence of funding institutions
- Student Exchange: attractiveness for Jordanian students?

Thank you very much for your attention!

nina.wolfeil@tu-cottbus.de

