

Coburg University of applied Sciences and Arts



BAU|HOCH|SCHULE
COBURG 1814|2014



Friedrich Streib, the founder

HUBERTUS HABEL | ANTONIA HUMM

AUS STREIBS WOHNSTUBE ZUM DOKTORHUT



Festordnung

**Jubelfeier des 50^{ten} Bestehens der
Herzogl. S. Baugewerkschule.**

Freitag, den 5. Dezember.
 Nachmittags: Empfang der auswärtigen Gäste.
 Abends 7^{1/2} Uhr: Fackelzug. Nach demselben: Gemüthliches Beisammensein im Vereinszimmer (Hotel goldener Anker).

Sonnabend, den 6. Dezember.
 11 Uhr: Feste der Herzogl. Baugewerkschule in dem Festsale der Herzogl. Oberrealschule Ernestinum (am Glockenberg).
 12^{1/2} Uhr: Spaziergang nach der Feste.
 1 Uhr: Zwangloses Essen, angeschlossen Besichtigung der Herzoglichen Sammlungen.
 3^{1/2} Uhr: Abmarsch zum Saale der Vereinsbrauerei,
 4^{1/2} Uhr: Festkommers mit darauffolgendem Ball im Saale der Vereinsbrauerei.

Sonntag, den 7. Dezember.
 2^{1/2} Uhr Nachmittags: Winterbammel nach Meuses. —
 Zusammenkunft am Bahnhof.
 Der Vorstand des Techn. Vereins Bernh. Felisch.
 I. A.: Schuchardt.

The big 5

Construction
and
Design

Engineering Sciences
Natural Sciences
Computer Sciences

Sciences
and
Humanities

Social work
and
Health

Business
administration



Data and facts

5.200 students | **6** faculties | **32** study programs
1 center of sciences and humanities
5 research institutes
390 employees | **117** professors
3 research priorities | **25.000.000** EUR budget



Campus Friedrich Streib



Campus Design



Programs of study

Analytical Instruments, Measurement and Sensor Technology
Architecture
Automotive Technology
Automation Technology and Robotics
Civil Engineering
Energy Efficient Building Design
Business Administration
Bioanalysis
Design
Heritage Preservation
Information Technology and Enterprise Applications
Electrical Engineering and Information Technology
Renewable Energies
Financial Management
Health Promotion
Industrial Management
Computer Sciences
Interior Architecture
Integrated Product Design
Insurance
Insurance Management
Social Work
International Social Work
Clinical Social Work
Mechanical Engineering
Simulation and Testing
Sustainable Planning and Design
Engineering Physics

Looking particularly ...

Study

18 undergraduate

11 interdisciplinary programs

11 dual programs

2 joint programs

14 graduate

2 english programs

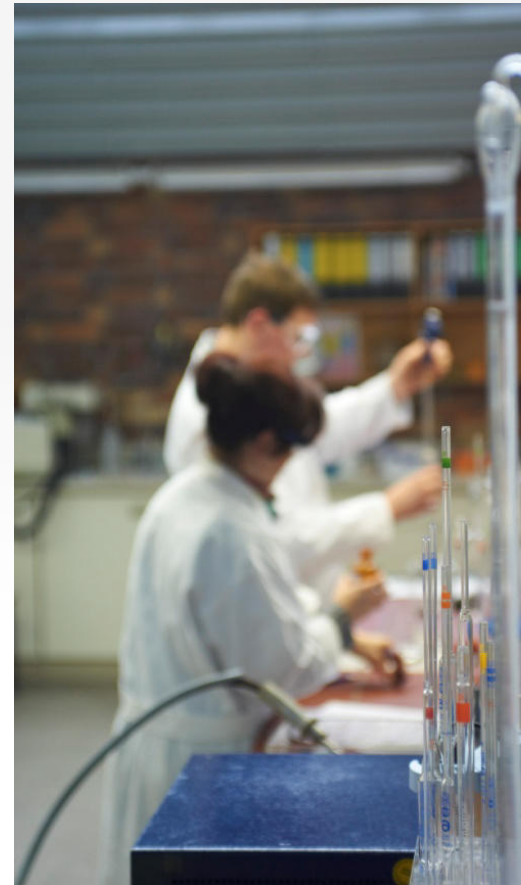
3 joint programs

Research Priorities

1. Automotive

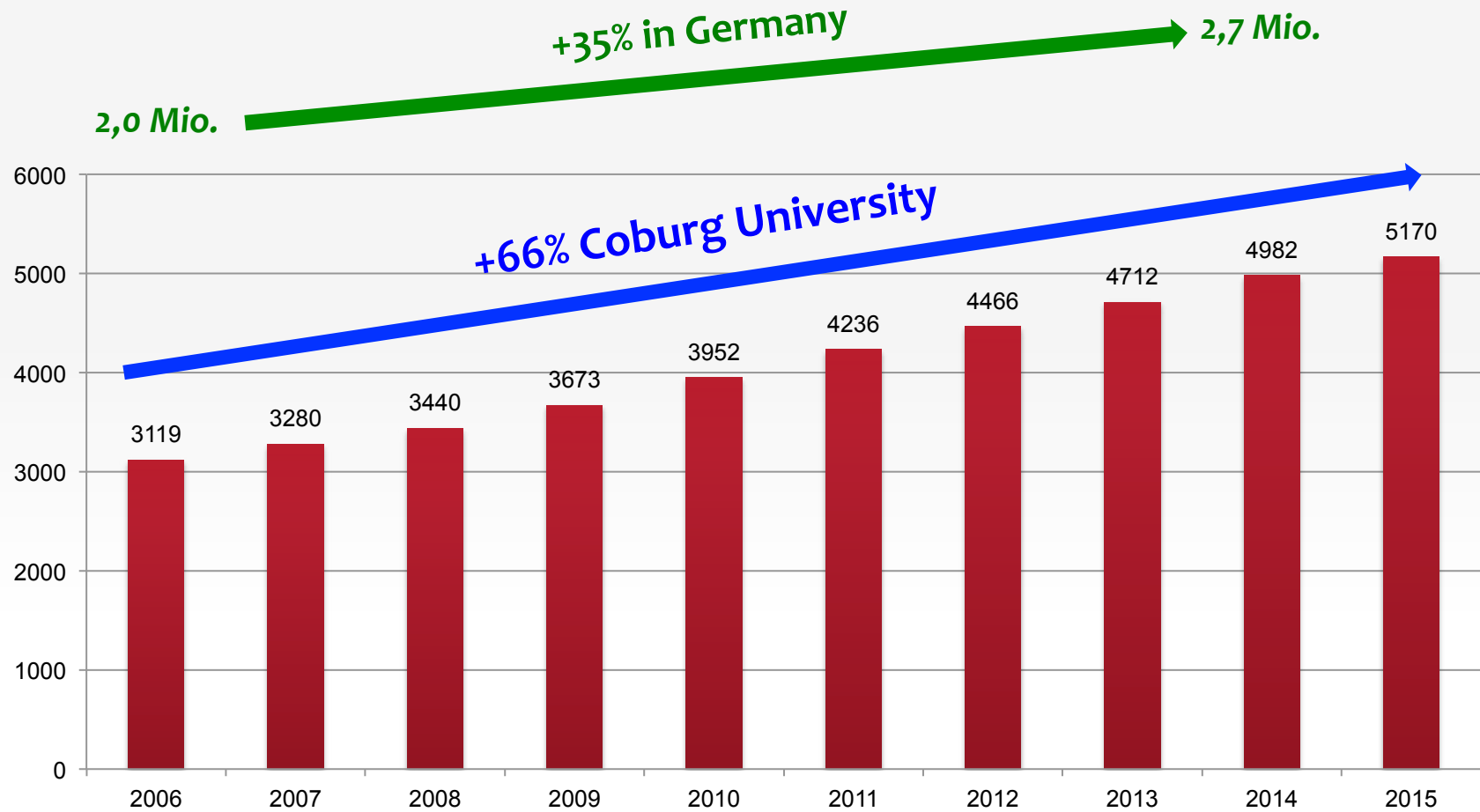
**2. Measurement- and
Sensor Technology**

3. Health Promotion





Number of students





Vision – Our interest in designing the future

Our university takes over the **role in society**.

Sie steht im Dialog mit den Menschen, bereitet den Weg für künftige Generationen, gibt Impulse in die wissenschaftliche Community und ist ein unverzichtbarer Akteur für die regionale Entwicklung.

*Sie setzt dabei in besonderer Weise auf **Anwendungsbezug**, **Interdisziplinarität** und die **schöpferische Kraft** des Einzelnen.*

aus: Hochschulentwicklungsplan (HEPCo 2020)



Our strategy in education

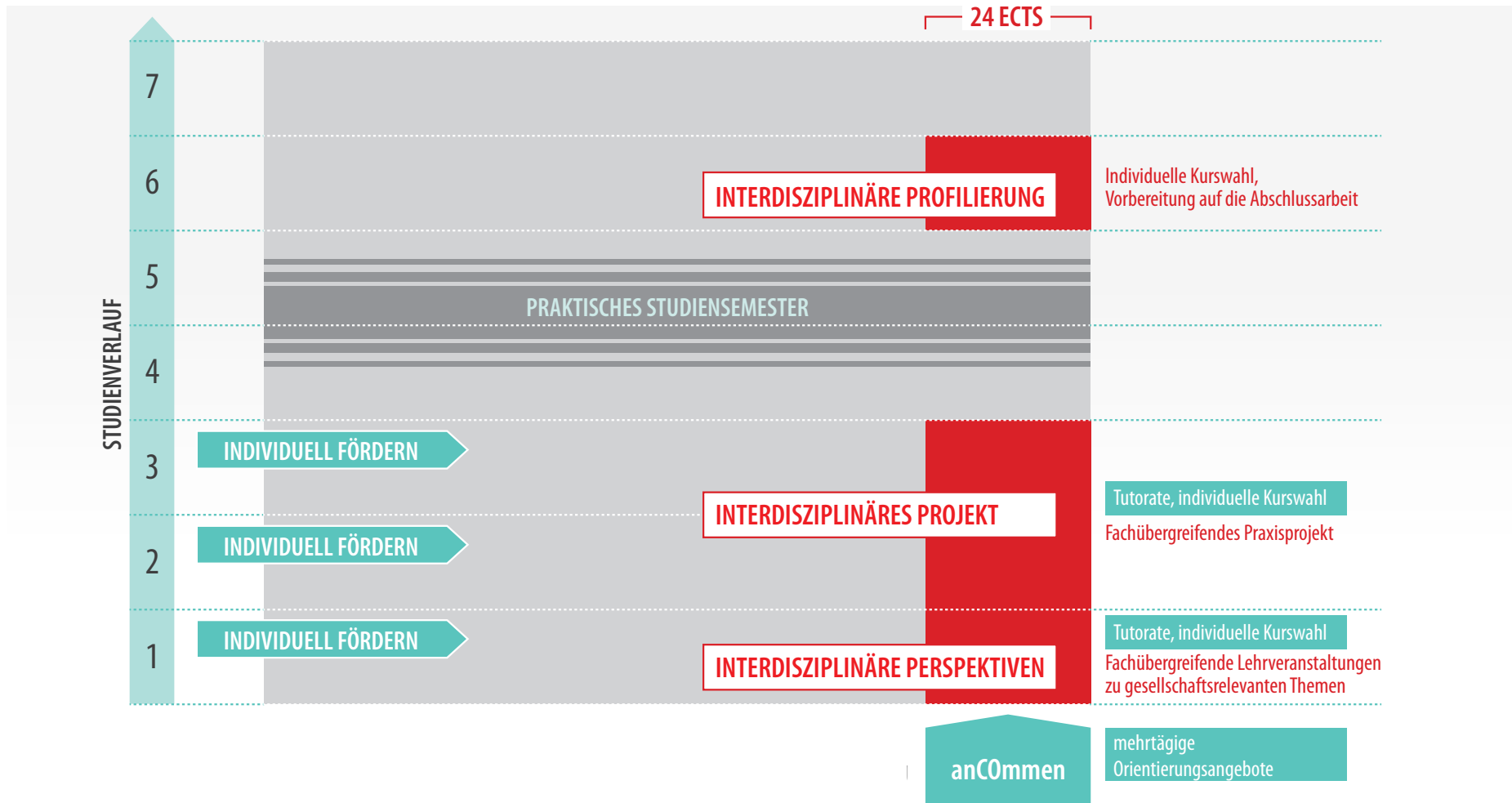
We focus not only on employability but also on responsibility for the society.

Die Hochschule Coburg fördert ihre Studierenden beim Erwerb fachlicher Expertise und unterstützt deren nachhaltige Horizonsweiterung. Diese manifestiert sich im Rahmen einer strukturell verankerten interdisziplinären Lehre, Forschung und Weiterbildung sowie durch die Auseinandersetzung mit gesellschaftlich relevanten Themen. Im Fokus stehen die Befähigung zum Perspektivenwechsel und die Persönlichkeitsentwicklung.

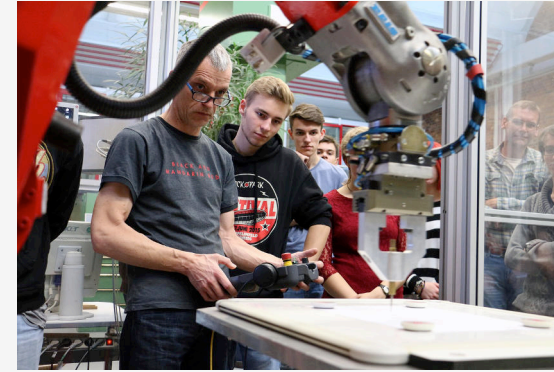
aus: Hochschulentwicklungsplan (HEPCo 2020)



The Coburg Way of interdisciplinary study for 750 beginners



Teamwork ...



Our strategy in research

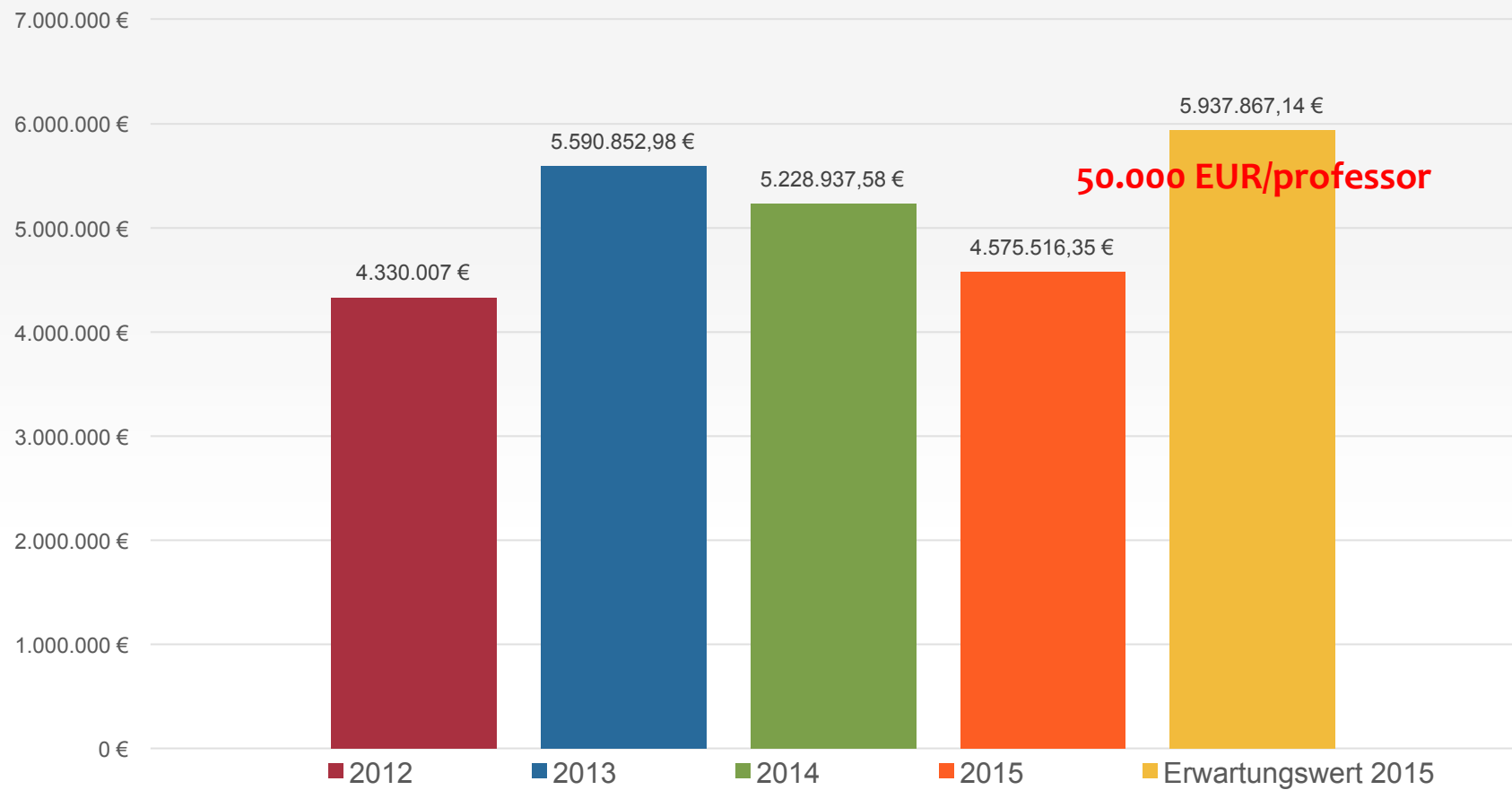
We focus on a profile forming balance between research and education.

Die Hochschule Coburg ist einer exzellenten Lehre verpflichtet und sieht Forschung als eine treibende Kraft hierfür an. Forschendes und projektbezogenes Lernen sowie experimentelle Lehrformate sind wesentliche Elemente unseres Profils. Ein eigenständiges Promotionsrecht eröffnet unseren AbsolventInnen neue wissenschaftliche Karrierewege.

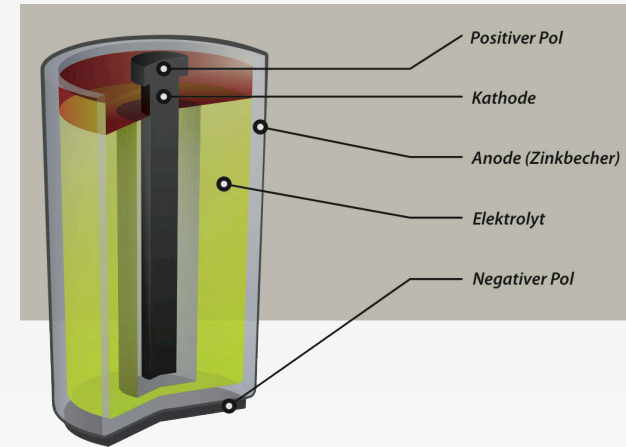
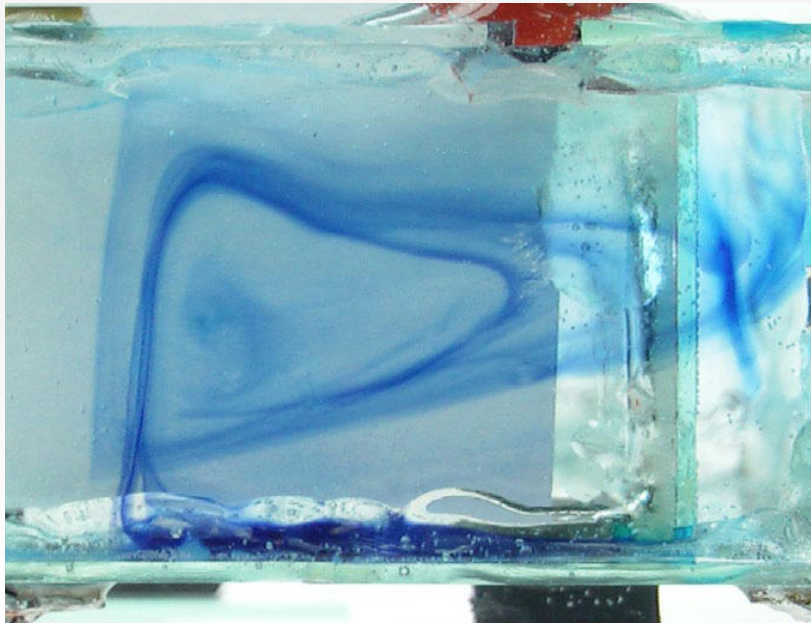
aus: Hochschulentwicklungsplan (HEPCo 2020)



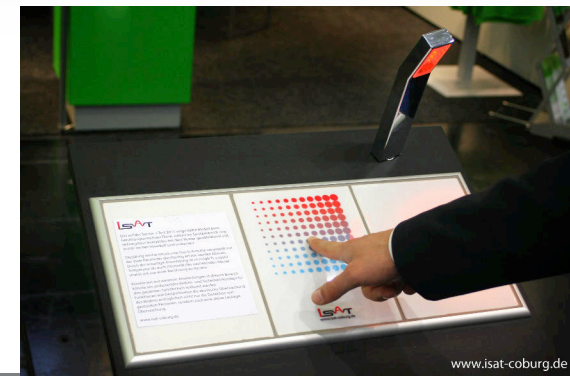
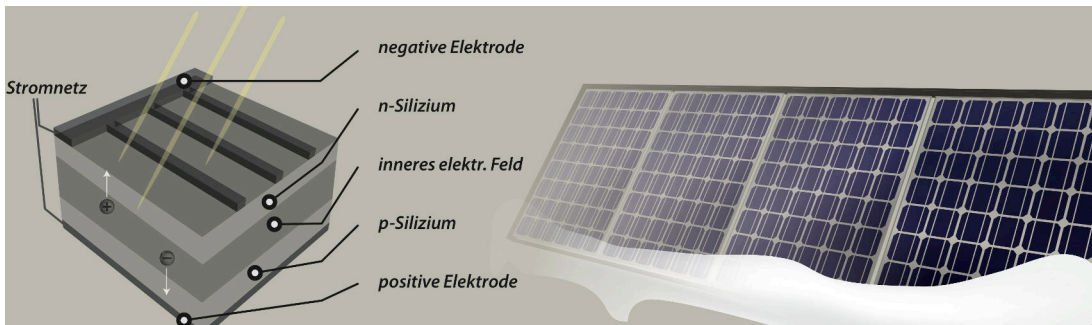
External funds from study and research projects



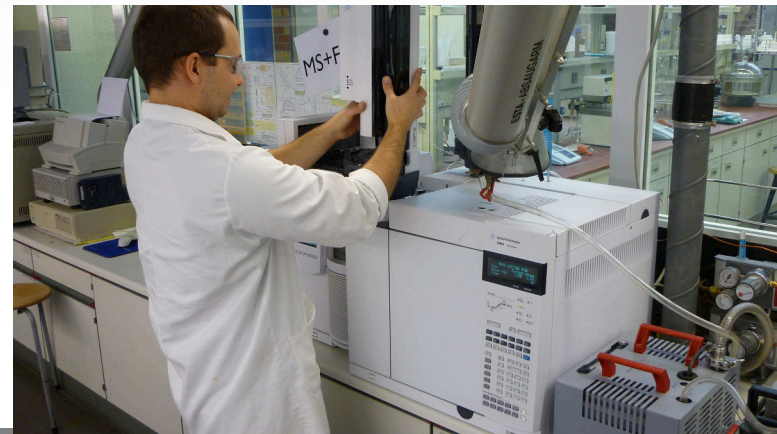
30 professors, 50 scientists are working on future challenges.
 45 PhD students are dealing with ...



Sensor technology



Automotive



Design



FORMULA STUDENT GERMANY

FSC15 Overall Scoring Results [ver. 1 | 2015-08-02 23:13]



A dream ...

5. Coburg from 71

FSC15 Overall Scoring Results

Car	City / University	Cost	BPP	Design	ACC	SkidPad	AutoX	Endu	Effic	Penalties	Overall Scores	Overall Placing
1	Corvallis OSU	85.77	64.63	135.00	59.01	75.00	100.00	325.00	83.93	0.00	926.33	1
2	Stuttgart U	86.52	61.28	115.00	66.34	69.62	89.71	320.62	76.31	0.00	885.41	2
15	Graz UAS	77.31	50.43	148.00	75.00	60.67	51.65	228.37	53.85	0.00	745.28	3
53	Graz TU	52.58	64.19	90.00	65.43	58.22	77.28	256.57	79.58	0.00	743.85	4
53	Coburg UAS	73.05	37.12	95.00	47.46	36.21	59.21	246.94	62.94	5.00	652.93	5
76	Hatfield UH	65.82	64.97	105.00	27.08	45.69	49.13	188.41	74.30	0.00	630.40	6
49	Erlangen U	64.68	53.67	105.00	51.26	60.00	4.50	208.01	77.97	0.00	625.88	7
94	Esslingen UAS	79.19	63.63	115.00	58.96	40.51	0.00	120.29	100.00	0.00	577.59	8
110	Wrocław TU	56.51	50.21	80.00	63.74	36.08	44.19	172.44	41.27	0.00	544.43	9
55	Gießen UAS THM	45.66	68.10	95.00	63.34	51.41	20.53	162.03	36.60	0.00	542.67	10
75	Glasgow U Strath	73.88	63.85	65.00	49.41	45.13	4.50	165.64	65.56	5.00	527.97	11
108	Loughborough U	51.00	27.96	80.00	58.91	58.59	36.07	189.20	41.23	0.00	525.87	12
95	Valencia UPV	59.81	58.26	80.00	58.49	32.30	55.24	152.76	18.08	0.00	514.92	13
28	Kassel U	73.02	52.33	100.00	34.43	50.09	61.49	104.03	37.19	0.00	512.58	14
73	Changsha U Hunan	84.86	46.96	65.00	57.93	29.76	11.10	151.43	41.67	0.00	488.72	15
9	Pomona CSU	64.50	40.93	85.00	53.33	41.85	54.31	95.31	47.90	0.00	483.13	16
76	München UAS	83.95	70.00	125.00	62.65	33.75	53.79	0.00	23.44	0.00	464.58	17
41	München TU	75.25	74.00	150.00	38.50	24.79	97.62	0.00	0.00	0.00	460.16	18
69	Lawrence KU	69.94	32.88	115.00	56.72	31.58	37.51	111.88	2.00	0.00	457.51	19
60	Weingarten UAS	89.46	52.67	105.00	3.50	0.00	10.57	148.36	29.35	0.00	438.91	20
21	Karlsruhe KIT	76.35	56.13	115.00	63.74	38.64	74.91	0.00	0.00	0.00	424.77	21
92	Oxford Brookes U	67.42	44.50	105.00	40.90	51.64	67.39	0.00	41.85	0.00	418.20	22
85	Padova U	64.54	61.50	115.00	66.59	37.47	62.82	0.00	0.00	0.00	407.92	23
23	Poznań PUT	59.58	68.21	75.00	37.49	26.45	4.50	102.18	26.23	0.00	399.64	24
25	London UWO	82.10	67.32	115.00	45.31	58.03	52.87	0.00	0.00	25.00	395.64	25
96	Hamburg UAS	58.14	34.66	100.00	50.87	53.53	81.71	0.00	0.00	5.00	373.92	26
57	Yoto U	73.49	95.00	95.00	39.53	44.69	8.00	65.85	9.40	0.00	369.77	27
27	Auburn U	71.93	63.74	105.00	61.15	39.19	24.71	0.00	0.00	0.00	365.73	28
120	Nevers ISAT	43.64	34.74	65.00	59.57	0.00	36.54	77.95	47.80	0.00	365.24	29
6	Seattle U Washington	46.35	51.44	120.00	40.92	53.86	50.14	0.00	0.00	0.00	362.72	30
103	Berlin TU	77.78	60.83	120.00	56.58	0.00	34.83	0.00	0.00	0.00	349.83	31
58	Radboud U	46.59	50.21	60.00	50.31	35.50	9.07	59.01	36.58	0.00	349.26	32
127	Schweinfurt UAS	21.12	33.44	55.00	36.93	31.63	24.03	59.71	43.75	0.00	345.61	33
74	Bmo TU	51.92	45.29	85.00	52.57	53.92	49.44	0.00	0.00	0.00	338.15	34
16	Montréal U McGill	74.67	74.00	145.00	0.00	0.00	37.13	0.00	0.00	0.00	330.80	35
43	Konstanz UAS	70.17	73.00	80.00	0.00	43.89	49.67	0.00	7.66	0.00	324.39	36
45	Diepholz UAS	71.53	57.70	40.00	12.43	37.89	5.96	76.74	19.79	0.00	322.04	37
99	Karlsruhe UAS	72.42	47.19	105.00	0.00	41.72	42.67	0.00	0.00	0.00	309.00	38
39	Toronto U	82.50	62.62	85.00	27.95	3.50	4.50	0.00	41.69	0.00	307.76	39
71	Pittsburgh U	66.45	50.10	100.00	43.17	0.00	4.50	27.76	0.00	5.00	286.99	40
38	Berlin UAS	44.19	67.76	90.00	16.74	43.26	4.50	0.00	0.00	0.00	266.46	41
33	Prague CTU	47.72	41.49	80.00	0.00	36.90	56.86	0.00	10.00	0.00	249.98	42
54	Vellore VIT	79.79	64.86	100.00	0.00	0.00	0.00	0.00	0.00	0.00	244.65	43
62	Regensburg OTH	79.24	59.27	100.00	0.00	0.00	0.00	0.00	0.00	5.00	233.51	44
90	Milano PT	64.37	40.39	90.00	42.02	0.00	4.50	0.00	0.00	10.00	231.28	45
24	Liverpool U	56.93	55.69	75.00	0.00	12.42	4.50	25.00	0.00	0.00	229.54	46
88	Kempton UAS	21.81	35.89	60.00	22.73	41.33	41.50	0.00	0.00	0.00	227.21	47
81	Stralsund UAS	67.57	39.93	65.00	16.13	30.03	8.39	0.00	0.00	0.00	227.05	48
63	Aachen UAS	45.89	28.40	90.00	0.00	53.30	0.00	0.00	0.00	0.00	217.59	49
80	Leiria PT	42.18	56.58	70.00	40.65	0.00	4.50	0.00	0.00	0.00	213.91	50
17	Rochester IT	36.67	36.90	115.00	31.62	21.60	0.00	0.00	0.00	30.00	211.78	51
50	Akron U	57.62	41.37	80.00	0.00	56.95	35.07	0.00	0.00	0.00	211.01	52
42	Darmstadt UAS	0.00	51.56	85.00	38.96	0.00	32.88	0.00	0.00	0.00	208.40	53
79	Pforzheim U	15.51	44.95	60.00	30.47	35.93	21.12	0.00	0.00	0.00	207.98	54
44	Ulm UAS	44.22	50.10	70.00	21.84	14.49	4.50	0.00	0.00	5.00	200.16	55
31	Coventry U Warwick	57.16	51.88	60.00	22.37	3.50	4.50	0.00	0.00	0.00	199.41	56
51	Sevilla U	71.17	33.77	90.00	0.00	0.00	0.00	0.00	0.00	0.00	194.94	57
26	San Sebastián TECNUN	74.00	46.42	60.00	0.00	0.00	4.50	0.00	0.00	0.00	187.92	58
11	Madrid TU	62.37	59.04	65.00	0.00	0.00	0.00	0.00	0.00	0.00	186.41	59
22	Moscow BMSTU	12.63	27.85	65.00	45.97	0.00	4.50	25.00	0.00	0.00	180.95	60
18	Aalborg U	62.66	37.91	35.00	29.61	0.00	4.50	0.00	0.00	0.00	169.68	61
30	Giza U Cairo	46.93	54.90	60.00	0.00	0.00	0.00	0.00	0.00	0.00	164.83	62
68	Karachi NUST	64.35	45.40	50.00	0.00	0.00	4.50	0.00	0.00	0.00	164.25	63
20	Magdeburg OVGU	31.21	35.34	55.00	33.71	0.00	0.00	0.00	0.00	0.00	155.26	64
46	Vigo U	43.23	36.91	70.00	0.00	0.00	0.00	0.00	0.00	0.00	150.14	65
98	Bangkok KMUTL	45.59	34.79	65.00	0.00	0.00	4.50	0.00	0.00	0.00	149.88	66
66	Uxbridge U Brunel	33.60	59.83	55.00	0.00	0.00	0.00	0.00	0.00	0.00	148.43	67
19	Roma U Sapienza	56.81	50.09	70.00	0.00	0.00	0.00	10.00	0.00	0.00	147.00	68
118	Krefeld HSNR	46.95	29.98	45.00	3.50	0.00	4.50	0.00	0.00	0.00	129.93	69
72	Chennai SRMU	51.74	36.12	30.00	3.81	0.00	4.50	0.00	0.00	0.00	126.17	70
14	Wuppertal U	15.43	25.50	50.00	0.00	0.00	0.00	0.00	0.00	0.00	90.93	71

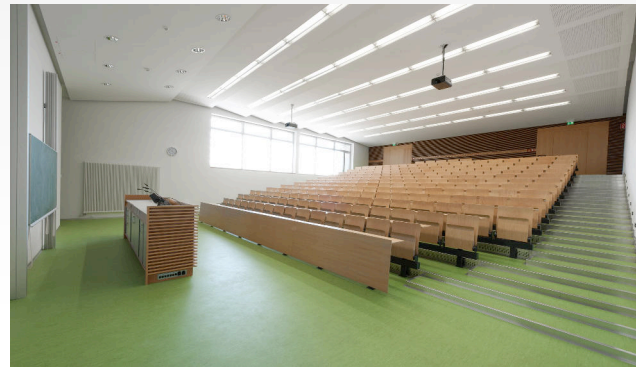




We are building for the **future**.
And we will invest **65 Mio. EUR**.



2009 – 2015



Investment: 25 Mio. EUR

2009 – 2015



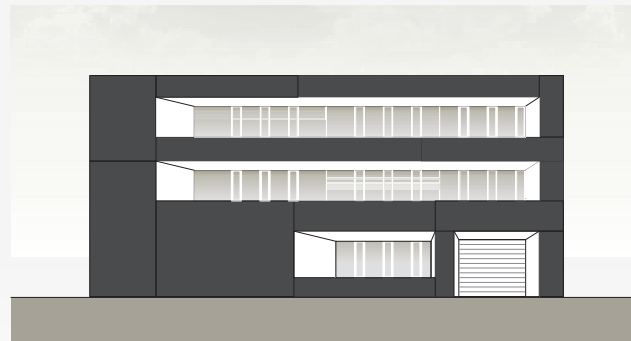
Investment: 38 Mio. EUR

Center of mobility and energy (CME)

will be completed in **2017**



Ansicht SÜD | M. 1:100



Ansicht OST | M. 1:100



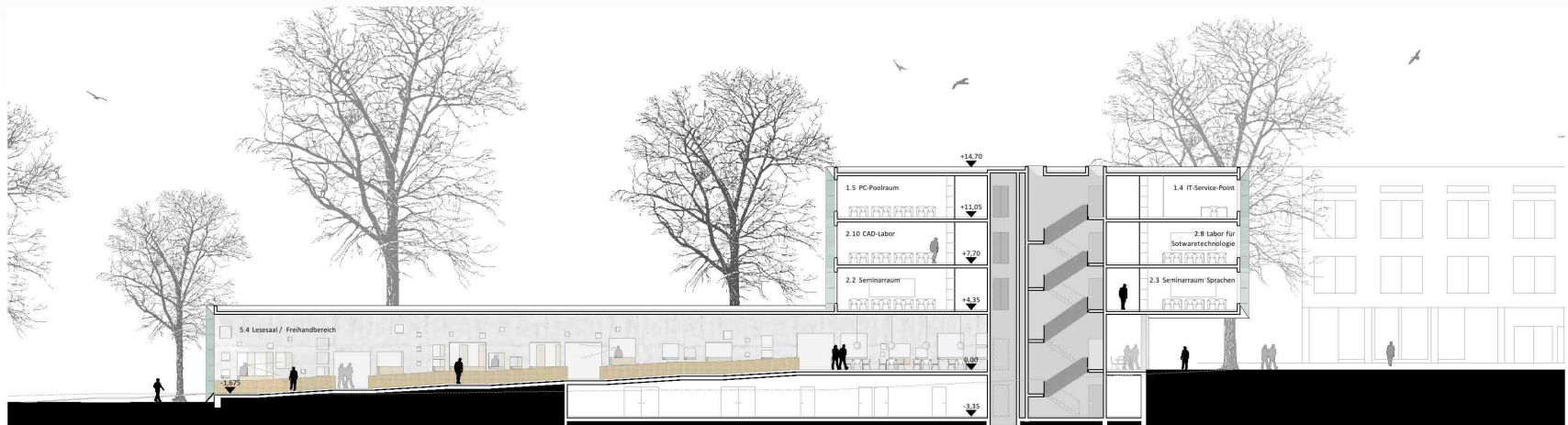
Ansicht NORD | M. 1:100



Ansicht WEST | M. 1:100

IT-Medien-Center

will be completed in **2019**



We would like to work on our **common future.**



A very warm **welcome** in Coburg!

